

Rockwell Solutions, Inc.

718 E Bridger Lane
Elk Ridge, UT 84651
(801) 361-2930

September 7, 2023

Mark Smith
Triple Stop Chevron
1034 West Gentile Street
Layton, Utah 84041

RE: Groundwater Monitoring Report, August 25, 2023
Triple Stop Chevron
1034 West Gentile Street, Layton, Utah 84041
Facility ID #3000500; Release NUB

Dear Mr. Smith:

Rockwell Solutions, Inc. completed groundwater monitoring activities for the above-referenced release on August 25, 2023. Groundwater samples were collected from sixteen monitoring wells. All other monitoring wells have had at least two consecutive samples that were below cleanup levels.

A groundwater removal event in the neighborhood in May and June 2022 removed 238,730 gallons of groundwater. The air sparge system at the gas station was shut down on September 16, 2022.

Groundwater samples were collected using a disposable bailer, immediately placed on ice, and retained under chain-of-custody documentation. Samples were analyzed for MTBE, benzene, toluene, ethylbenzene, total xylenes, naphthalene (MBTEXN) and total petroleum hydrocarbons (TPH) - gasoline range organics (GRO) using EPA Method 8260B and TPH-diesel range organics (DRO) using EPA Method 8015B. The analytical reports are attached.

A summary of the historical groundwater monitoring data including groundwater elevation and laboratory analytical data is presented in Table 1. The only sample that exceeded a Tier 1 level was benzene in MW-42. Figures 1 and 2 are isoconcentration maps showing the areas of benzene and TPH-GRO contamination, respectively.

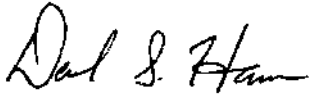
A groundwater elevation map is presented as Figure 3. Groundwater elevations decreased an average of 1.75 feet since the sampling event on April 21, 2023. The apparent direction of groundwater flow across the site on August 25, 2023, was to the southwest.

Contaminant concentrations have decreased significantly in the last year, but continue to fluctuate slightly in several monitoring wells. Rockwell Solutions will oversee hydrogen peroxide injections into affected monitoring wells to expedite the degradation of the remaining hydrocarbons.

Groundwater Monitoring Report, August 25, 2023
Triple Stop Chevron, Layton, UT., Facility ID #3000500

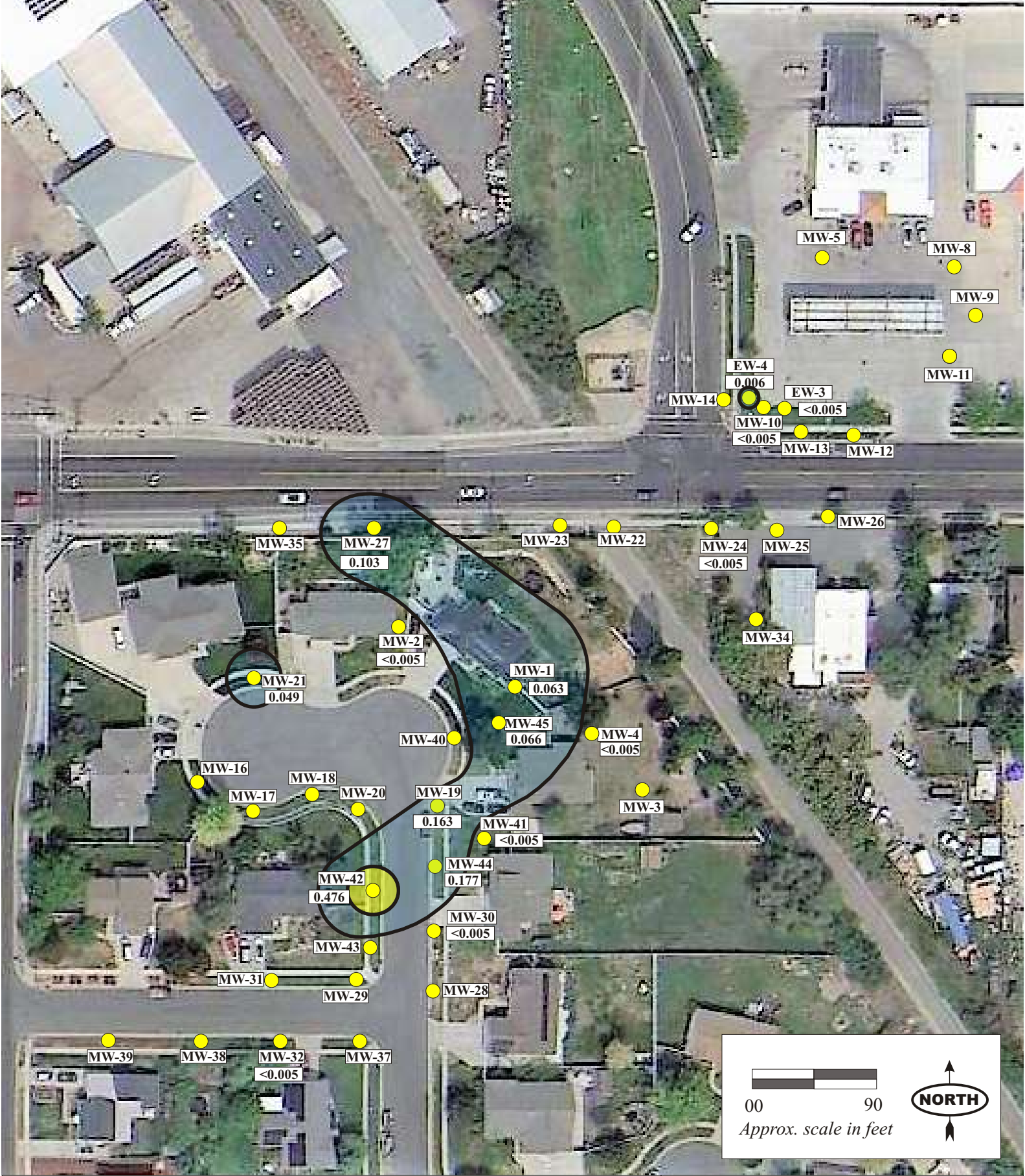
If you need additional information or have any questions, please contact me at (801) 361-2930.

Thank you,

A handwritten signature in black ink that reads "David S. Hansen". The signature is written in a cursive style with a large initial 'D'.

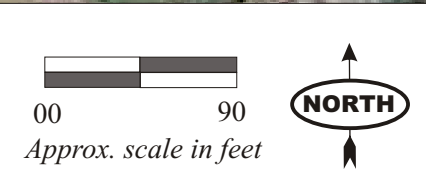
David S. Hansen
Certified UST Consultant CC0130
Rockwell Solutions, Inc.

cc: Kevin Beery, DERR

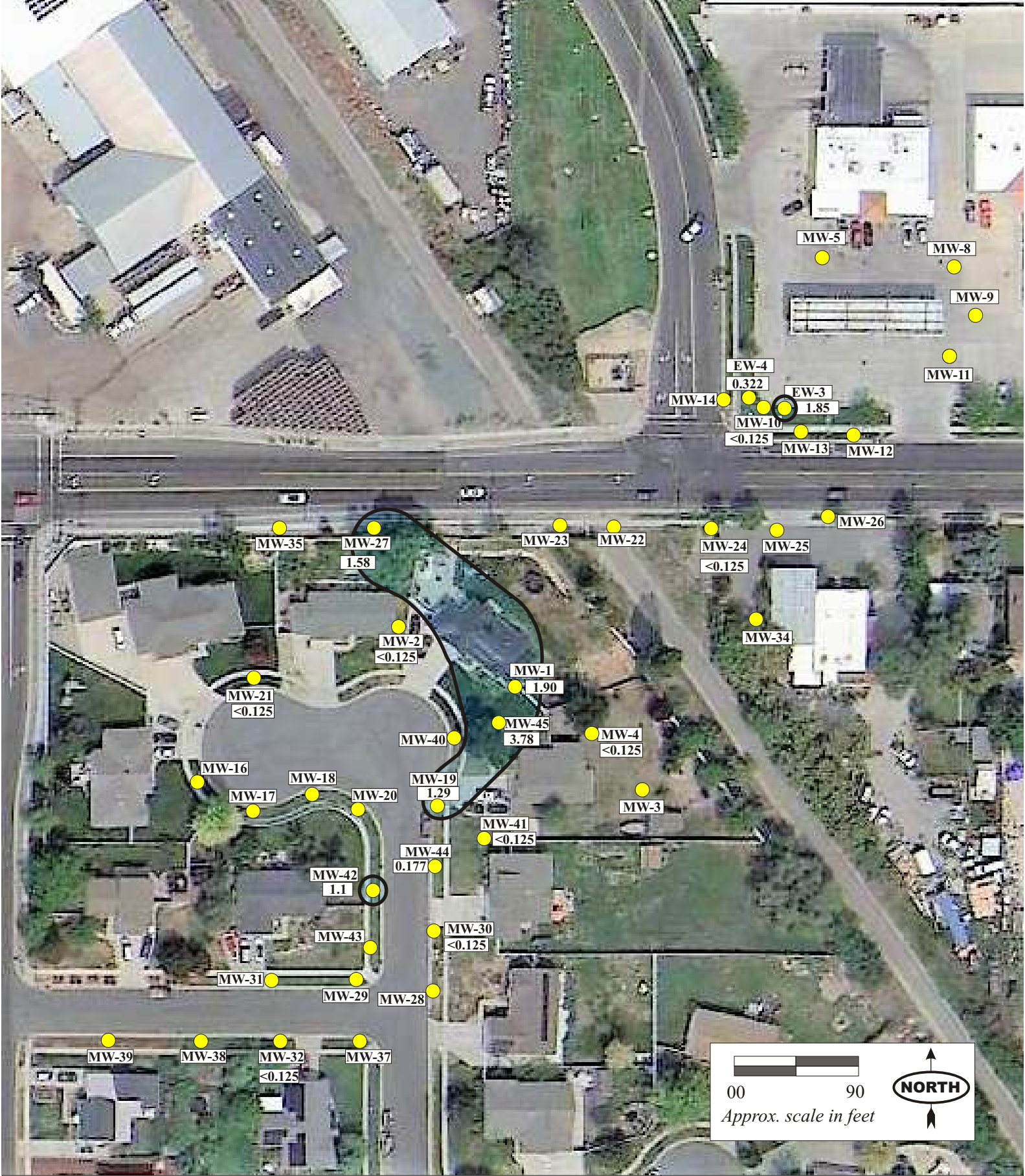


● Monitoring Well
 0.3 < 1.0
 0.005 < 0.3

Unsampled wells are assumed to have non-detectable concentrations



Triple Stop Chevron
1034 W Gentile Street
Layton, Utah
Figure 1 **Dissolved Benzene**
August 25, 2023



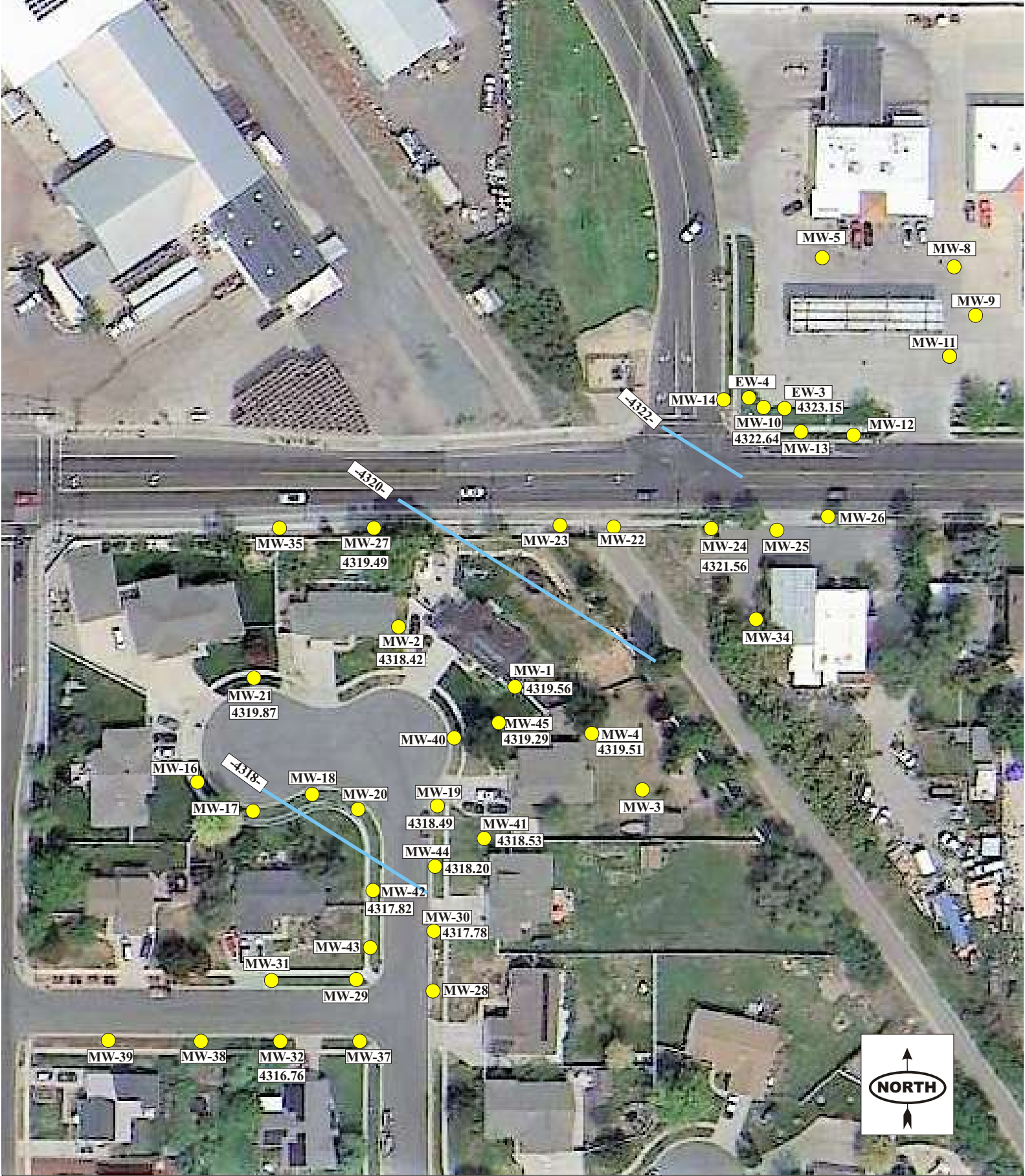
● 0.432 TPH (mg/L)

■ 10 < 20
■ 1.0 < 10

Unsampled wells are assumed to have non-detectable concentrations

Triple Stop Chevron
1034 W Gentile Street
Layton, Utah

Figure 2 **Dissolved TPH**
August 25, 2023



Triple Stop Chevron
1034 W Gentile Street
Layton, Utah

Figure 3 **Groundwater Contours**
August 25, 2023

Table 1
Groundwater Analytical Results and Elevation Data
Triple Stop Chevron
1034 West Gentile Street, Layton, Utah
Release NUB; Facility ID 3000500

Sample ID/ TOC	DATE	TPH-DRO	TPH-GRO	BENZENE	ETHYL- BENZENE	MTBE	NAPH- THALENE	TOLUENE	XYLENES	FPT	DTW	Groundwater Elevation
	MM/DD/YY	(mg/L)	(mg/L)	(mg/L)	(mg/L)	(mg/L)	(mg/L)	(mg/L)	(mg/L)	(feet)	(feet)	(feet)
DERR ISL		1	1	0.005	0.7	0.2	0.7	1	10			
DERR Tier 1		10	10	0.30	4	0.2	0.7	3	10			
MW-1	02/26/19	1.3	17.6	10.60	1.28	<0.005	0.101	0.416	1.63	NM	NM	4319.73
4330.19	03/15/19	1.1	7.67	3.06	0.377	<0.005	0.037	0.595	1.41	0.00	9.77	4319.73
	09/04/19	1.06	18.00	6.70	0.551	<0.00100	0.0440	2.41	3.18	0.00	10.46	4319.73
	09/26/19	1.73	11.00	5.63	0.475	<0.100	<0.100	2.06	2.53	0.00	10.60	4319.59
	01/06/20	0.912	25.50	4.38	0.578	<0.100	0.0773	2.08	3.28	0.00	10.71	4319.48
	04/01/20	0.440	<100	1.08	0.167	<0.200	<1.00	0.337	0.688	0.00	10.45	4319.74
	10/29/20	0.737	15.10	3.59	0.484	<0.002	0.0385	2.040	2.110	0.00	11.20	4318.99
	01/27/21	1.10	13.1	2.84	0.565	<0.0250	0.0451	0.463	1.75	0.00	11.53	4318.66
	04/07/21	1.50	2.79	2.89	0.0644	<0.00500	0.00837	1.12	0.396	0.00	10.99	4319.20
	07/15/21	1.17	132	4.24	0.781	<0.200	<1.00	1.3	5.58	0.00	11.27	4318.92
	10/06/2021	0.784	7.68	1.86	0.386	<0.0250	0.073	0.253	2.27	0.00	11.46	4318.73
	1/12/2022	0.305	<12.5	0.244	0.207	<0.0250	<0.125	0.0362	0.686	0.00	10.67	4319.52
	4/27/2022	<1	1.64	0.322	0.131	<0.005	0.01	0.072	0.395	0.00	10.87	4319.32
	7/18/2022	2.3	1.100	0.213	0.136	<0.005	0.014	0.043	0.273	0.00	11.26	4318.93
	10/19/2022	1.6	0.438	0.053	0.026	<0.005	0.018	<0.012	<0.012	0.00	11.60	4318.59
	1/30/2023	1.0	1.35	0.030	0.145	<0.005	0.026	0.018	0.43	0.00	10.15	4320.04
	4/21/2023	1.7	4.74	0.097	0.032	<0.005	0.233	1.540	0.034	0.00	8.76	4321.43
	8/25/2023	1.7	1.90	0.063	0.209	<0.005	0.023	0.012	0.439	0.00	10.63	4319.56

Table 1
Groundwater Analytical Results and Elevation Data
Triple Stop Chevron
1034 West Gentile Street, Layton, Utah
Release NUB; Facility ID 3000500

Sample ID/ TOC	DATE	TPH-DRO	TPH-GRO	BENZENE	ETHYL- BENZENE	MTBE	NAPH- THALENE	TOLUENE	XYLENES	FPT	DTW	Groundwater Elevation
	MM/DD/YY	(mg/L)	(mg/L)	(mg/L)	(mg/L)	(mg/L)	(mg/L)	(mg/L)	(mg/L)	(feet)	(feet)	(feet)
DERR ISL		1	1	0.005	0.7	0.2	0.7	1	10			
DERR Tier 1		10	10	0.30	4	0.2	0.7	3	10			
MW-2	02/26/19	<1.0	6.95	4.74	<0.012	<0.005	0.053	<0.012	0.106	NM	NM	4319.91
4330.01	03/15/19	<1.0	2.4	1.24	0.03	<0.005	0.028	0.018	0.086	0.00	10.10	4319.91
	09/04/19	<0.100	0.430	0.02	0.00398	<0.00100	<0.00500	<0.00100	<0.00300	0.00	10.58	4319.43
	01/06/20	0.0807	1.760	0.33	0.0522	<0.00100	0.00473	0.000562	0.0182	0.00	10.92	4319.09
	04/01/20	0.383	4.480	0.76	0.132	<0.0100	0.0309	0.0134	0.6320	0.00	10.65	4319.36
	10/29/20	0.636	9.050	1.12	0.370	<0.001	0.0532	0.0226	1.2	0.00	11.28	4318.73
	01/27/21	0.139	2.92	0.282	0.115	<0.0100	<0.0500	0.3220	0.584	0.00	11.61	4318.40
	04/07/21	0.418	1.45	0.264	0.0441	<0.0100	<0.0500	0.0102	0.121	0.00	11.10	4318.91
	07/15/21	<0.100	0.575	0.00204	0.000733	<0.00100	<0.00500	<0.00100	0.000697	0.00	11.27	4318.74
	10/06/2021	0.403	7.67	0.527	0.307	<0.0100	0.0492	0.0519	2.32	0.00	11.49	4318.52
	1/12/2022	<0.100	<5.0	0.0777	0.108	<0.0100	<0.0500	0.0145	0.333	0.00	10.98	4319.03
	4/27/2022	<1	<0.125	0.01	0.02	<0.005	<0.012	<0.012	0.014	0.00	11.08	4318.93
	7/18/2022	<1	<0.125	0.008	0.008	<0.005	<0.012	<0.012	<0.012	0.00	11.27	4318.74
	10/19/2022	<1	0.363	0.212	0.021	<0.005	<0.012	0.015	0.115	0.00	11.59	12963.29
	1/30/2023	1.10	2.33	0.206	0.117	<0.005	0.0280	0.030	1.340	0.00	10.33	4319.68
	4/21/2023	<1.0	0.818	0.015	<0.012	<0.005	0.1430	0.170	<0.012	0.00	9.14	4320.87
	8/25/2023	<1.0	<0.125	<0.005	<0.012	<0.005	<0.012	<0.012	<0.012	0.00	10.72	4319.29
MW-3*	03/15/19	<1.0	2.71	0.550	0.073	<0.005	<0.012	0.027	0.813	0.00	9.51	4319.78
MW-3	03/19/19	<1.0	<0.125	<0.005	<0.012	<0.005	<0.012	<0.012	<0.012	0.00	8.72	4320.57
4329.29	09/04/19	<0.100	0.327	<0.00100	<0.00100	<0.00100	<0.00100	<0.00100	<0.00100	0.00	9.74	4319.55
	01/06/20	<0.100	<0.500	<0.00100	<0.00100	<0.00100	<0.00100	<0.00100	<0.00100	0.00	9.84	4319.45
	04/01/20	<0.100	<0.500	0.00168	<0.00100	<0.00100	<0.00500	<0.00100	<0.00100	0.00	9.54	4319.75
	7/18/2022	<1.0	<0.125	<0.005	<0.012	<0.005	<0.012	<0.012	<0.012	0.00	10.57	4318.72
	10/19/2022	<1.0	<0.125	<0.005	<0.012	<0.005	<0.012	<0.012	<0.012	0.00	11.91	4317.38
	1/30/2023	<1.0	<0.125	<0.005	<0.012	<0.005	<0.012	<0.012	<0.012	0.00	9.32	4319.97

Table 1
Groundwater Analytical Results and Elevation Data
Triple Stop Chevron
1034 West Gentile Street, Layton, Utah
Release NUB; Facility ID 3000500

Sample ID/ TOC	DATE	TPH-DRO	TPH-GRO	BENZENE	ETHYL- BENZENE	MTBE	NAPH- THALENE	TOLUENE	XYLENES	FPT	DTW	Groundwater Elevation
	MM/DD/YY	(mg/L)	(mg/L)	(mg/L)	(mg/L)	(mg/L)	(mg/L)	(mg/L)	(mg/L)	(feet)	(feet)	(feet)
DERR ISL		1	1	0.005	0.7	0.2	0.7	1	10			
DERR Tier 1		10	10	0.30	4	0.2	0.7	3	10			
MW-4*	03/15/19	<1.0	<0.125	<0.005	<0.012	<0.005	<0.012	<0.012	<0.012	0.00	8.83	4321.22
MW-4	03/19/19	<1.0	1.23	0.2560	0.020	<0.005	<0.012	<0.012	0.302	0.00	9.40	4320.65
4330.05	09/04/19	<0.100	0.351	0.0050	<0.00100	<0.00100	<0.00100	<0.00100	<0.00100	0.00	10.35	4319.70
	01/06/20	<0.100	1.680	0.3350	0.00165	<0.00100	<0.00100	0.0149	0.0103	0.00	10.56	4319.49
	04/01/20	<0.100	0.259	0.09860	<0.00100	<0.00100	<0.00500	0.00319	<0.00300	0.00	10.22	4319.83
	10/29/20	<0.100	0.0598	0.0110	<0.00100	<0.00100	<0.00500	<0.00100	<0.00300	0.00	11.00	4319.05
	01/27/21	<0.100	<0.500	0.00222	<0.00100	<0.00100	<0.00500	<0.00100	<0.00300	0.00	11.37	4318.68
	04/07/21	0.0421	<0.500	0.0101	<0.00100	<0.00100	<0.00500	<0.00100	0.000772	0.00	10.80	4319.25
	07/15/21	<0.100	<0.500	0.00301	<0.00100	<0.00100	<0.00500	<0.00100	<0.00300	0.00	11.13	4318.92
	10/06/2021	<0.100	1	0.237	0.00154	<0.00100	<0.00500	0.00752	0.0413	0.00	11.32	4318.73
	1/11/2022	0.695	2.3	0.446	0.0118	<0.005	0.0145	0.00203	0.24	0.00	10.67	4319.38
	7/18/2022	<1	<0.125	0.013	<0.012	<0.005	<0.012	<0.012	<0.012	0.00	11.20	4318.85
	10/19/2022	<1	<0.125	0.013	<0.012	<0.005	<0.012	<0.012	<0.012	0.00	11.49	4318.56
	1/30/2023	<1.0	<0.125	<0.005	<0.012	<0.005	<0.012	<0.012	<0.012	0.00	9.96	4320.09
	4/21/2023	<1.0	<0.125	<0.005	<0.012	<0.005	<0.012	<0.012	<0.012	0.00	8.42	4321.63
	8/25/2023	<1.0	<0.125	<0.005	<0.012	<0.005	<0.012	<0.012	<0.012	0.00	10.54	4319.51
MW-5	03/15/19	<1.0	<0.125	<0.005	<0.012	<0.005	<0.012	<0.012	<0.012	0.00	8.65	4325.22
4333.87	01/13/22	<0.100	<0.5		<0.00100	<0.00100	<0.00500	<0.00100	<0.00300	0.00	10.93	4322.94
MW-6 4334.12	03/15/19	<1.0	<0.125	<0.005	<0.012	<0.005	<0.012	<0.012	<0.012	0.00	8.50	4325.62
MW-7 4333.96	03/15/19	<1.0	<0.125	<0.005	<0.012	<0.005	<0.012	<0.012	<0.012	0.00	8.51	4325.45

**Table 1
Groundwater Analytical Results and Elevation Data
Triple Stop Chevron
1034 West Gentile Street, Layton, Utah
Release NUB; Facility ID 3000500**

Sample ID/ TOC	DATE	TPH-DRO	TPH-GRO	BENZENE	ETHYL- BENZENE	MTBE	NAPH- THALENE	TOLUENE	XYLENES	FPT	DTW	Groundwater Elevation
	MM/DD/YY	(mg/L)	(mg/L)	(mg/L)	(mg/L)	(mg/L)	(mg/L)	(mg/L)	(mg/L)	(feet)	(feet)	(feet)
DERR ISL		1	1	0.005	0.7	0.2	0.7	1	10			
DERR Tier 1		10	10	0.30	4	0.2	0.7	3	10			
MW-8	03/15/19	<1.0	<0.125	<0.005	<0.012	<0.005	<0.012	<0.012	<0.012	0.00	9.07	4325.81
4334.88	09/04/19	<0.100	0.33	<0.00100	<0.00100	<0.00100	<0.00100	<0.00100	<0.00100	0.00	10.31	4324.57
	01/06/20	<0.100	<0.500	<0.00100	<0.00100	<0.00100	<0.00100	<0.00100	<0.00100	0.00	10.16	4324.72
	03/31/20	<0.100	<0.500	<0.00100	<0.00100	<0.00100	<0.00100	<0.00100	<0.00100	0.00	9.96	4324.92
	10/29/20	<0.0247	<0.100	<0.00100	<0.00100	<0.0001	0.00101	<0.00100	<0.00300	0.00	10.96	4323.92
	01/27/21	<0.100	<0.500	0.000136	<0.00100	<0.00100	<0.00500	<0.00100	<0.00300	0.00	11.04	4323.84
	04/08/21	<0.100	<0.500	<0.00100	<0.00100	<0.00100	<0.00500	<0.00100	<0.00300	0.00	10.49	4324.39
	07/13/21	<0.100	<0.500	<0.00100	<0.00100	<0.00100	<0.00500	<0.00100	<0.00300	0.00	10.90	4323.98
	10/07/2021	<0.100	<0.500	<0.00100	<0.00100	<0.00100	0.0171	<0.00100	<0.00300	0.00	11.26	4323.62
	1/13/2022	<0.100	<0.500	<0.00100	<0.00100	<0.00100	<0.00500	<0.00100	<0.00300	0.00	10.37	4324.51
MW-9	03/15/19	0.0379	<0.125	<0.005	<0.012	<0.005	<0.012	<0.012	<0.012	0.00	8.95	4325.62
4334.57	7/19/2022	<1	<0.125	<0.005	<0.012	<0.005	<0.012	<0.012	<0.012	0.00	11.00	4323.57
	10/18/2022	<1	<0.125	<0.005	<0.012	<0.005	<0.012	<0.012	<0.012	0.00	11.52	4323.05
	1/28/2023	<1.0	<0.125	<0.005	<0.012	<0.005	<0.012	<0.012	<0.012	0.00	9.52	4325.05
MW-10	03/12/19	13.2	33.1	9.32	1.12	<0.005	0.221	4.65	7.72	0.09	10.10	4324.43
4334.46	03/15/19	11.8	78.0	14.5	2.32	<0.005	0.394	25.1	18.1	0.00	10.00	4324.46
	03/20/19	13.3	68.7	13.8	2.13	<0.100	0.598	17.9	16.2	0.00	9.98	4324.48
	04/08/21	10.8	23.1	0.0662	0.119	<0.050	0.177	0.710	6.88	0.00	12.10	4322.36
	10/08/2021	1.68	10.8	0.0741	0.309	<0.0500	0.153	1.64	4.36	0.01	12.86	4321.61
	01/12/22	2.87	29	<0.05	0.571	<0.0500	0.174	0.802	9.83	0.01	12.01	4322.46
	6/10/2022	5.5	10.1	<0.005	<0.012	<0.005	0.033	0.107	3.34	0.00	NM	
	7/19/2022	<1.0	0.42	<0.005	<0.012	<0.005	<0.012	<0.012	0.152	0.00	12.42	4322.04
	10/18/2022	<1.0	0.29	<0.005	<0.012	<0.005	<0.012	<0.012	0.076	0.00	12.77	4321.69
	1/28/2023	1.6	0.439	<0.005	<0.012	<0.005	<0.012	<0.012	0.121	0.00	10.92	4323.54
	4/21/2023	<1.0	<0.125	<0.005	<0.012	<0.005	<0.012	<0.012	<0.012	0.00	9.73	4324.73
	8/25/2023	<1.0	<0.125	<0.005	<0.012	<0.005	<0.012	<0.012	0.111	0.00	11.82	4322.64

**Table 1
Groundwater Analytical Results and Elevation Data
Triple Stop Chevron
1034 West Gentile Street, Layton, Utah
Release NUB; Facility ID 3000500**

Sample ID/ TOC	DATE	TPH-DRO	TPH-GRO	BENZENE	ETHYL- BENZENE	MTBE	NAPH- THALENE	TOLUENE	XYLENES	FPT	DTW	Groundwater Elevation
	MM/DD/YY	(mg/L)	(mg/L)	(mg/L)	(mg/L)	(mg/L)	(mg/L)	(mg/L)	(mg/L)	(feet)	(feet)	(feet)
DERR ISL		1	1	0.005	0.7	0.2	0.7	1	10			
DERR Tier 1		10	10	0.30	4	0.2	0.7	3	10			
MW-11	03/15/19	<1.0	<0.125	<0.005	<0.012	<0.005	<0.012	<0.012	<0.012	0.00	9.16	4325.53
4334.69	01/11/22	<0.100	<0.500	0.000125	<0.00100	<0.00100	<0.005	0.000429	0.000440	0.00	9.16	4325.53
MW-12	02/27/19	<1.0	4.54	0.32	0.019	<0.005	<0.012	0.125	0.069	NM	NM	--
4332.49	03/15/19	<1.0	4.92	0.1580	0.012	<0.005	<0.012	0.082	0.044	0.00	7.46	4325.03
	09/05/19	0.0562	2.11	0.0746	0.00274	<0.00100	<0.00500	0.00673	0.0107	0.00	10.57	4321.92
	01/08/20	<0.100	0.193	0.0076	<0.00100	<0.00100	<0.00500	<0.00100	0.00110	0.00	9.49	4323.00
	03/31/20	<0.100	0.159	0.0036	<0.00100	<0.00100	<0.00500	<0.00100	0.00172	0.00	9.23	4323.26
	7/19/2022	<1	<0.125	<0.005	<0.012	<0.005	<0.012	<0.012	<0.012	0.00	10.23	4322.26
	10/18/2022	<1	<0.125	<0.005	<0.012	<0.005	<0.012	<0.012	<0.012	0.00	10.59	4321.90
	1/28/2023	<1.0	<0.125	<0.005	<0.012	<0.005	<0.012	<0.012	<0.012	0.00	8.42	4324.07
MW-13	02/27/19	4.4	19.0	4.980	1.06	<0.200	<0.500	4.57	8.38	NM	NM	4324.82
4332.82	03/15/19	2.1	10.7	2.29	0.464	<0.005	0.039	1.27	3.06	0.00	8.00	4324.82
	03/20/18	2.9	17.0	3.020	0.635	<0.005	0.045	1.97	4.42	0.00	8.01	4324.81
	09/05/19	2.5	57.3	2.530	1.53	<0.00100	0.171	1.47	11.50	0.00	9.88	4322.94
	01/08/20	0.655	4.09	0.225	0.133	<0.100	0.0298	0.0127	0.756	0.00	10.02	4322.80
	03/31/20	1.270	4.38	0.402	0.220	<0.0100	0.0383	0.0317	1.340	0.00	9.78	4323.04
	10/29/20	0.762	4.19	0.532	0.191	<0.001	0.0688	0.0573	0.876	0.00	10.53	4322.29
	01/27/21	0.146	<0.500	0.00343	0.00280	<0.001	0.00195	<0.00100	0.00209	0.00	10.56	4322.26
	04/08/21	0.267	0.272	0.00200	0.00305	<0.00100	<0.00500	<0.00100	0.000462	0.00	10.12	4322.70
	07/13/21	1.6	8.52	0.00349	0.524	<0.00100	0.0881	0.091	3.88	0.00	10.39	4322.43
	10/08/2021	3.35	9.96	0.0144	0.771	<0.0500	0.146	0.214	4.03	0.00	10.81	4322.01
	1/12/2022	0.153	0.739	0.000456	0.0297	<0.001	0.00251	<0.00100	0.0122	0.00		
	7/19/2022	<1	<0.125	<0.005	<0.012	<0.005	<0.012	<0.012	<0.012	0.00	10.77	4322.05
	10/18/2022	<1	0.224	<0.005	<0.012	<0.005	<0.012	<0.012	0.029	0.00	10.93	4321.89
	1/28/2023	<1.0	0.133	<0.005	<0.012	<0.005	<0.012	<0.012	<0.012	0.00	8.92	4323.90

Table 1
Groundwater Analytical Results and Elevation Data
Triple Stop Chevron
1034 West Gentile Street, Layton, Utah
Release NUB; Facility ID 3000500

Sample ID/ TOC	DATE	TPH-DRO	TPH-GRO	BENZENE	ETHYL- BENZENE	MTBE	NAPH- THALENE	TOLUENE	XYLENES	FPT	DTW	Groundwater Elevation
	MM/DD/YY	(mg/L)	(mg/L)	(mg/L)	(mg/L)	(mg/L)	(mg/L)	(mg/L)	(mg/L)	(feet)	(feet)	(feet)
DERR ISL		1	1	0.005	0.7	0.2	0.7	1	10			
DERR Tier 1		10	10	0.30	4	0.2	0.7	3	10			
MW-14	02/27/19	3.3	13.5	2.090	0.511	<0.005	0.046	0.804	3.44	NM	NM	--
4332.86	03/15/19	2.5	9.21	1.16	0.365	<0.005	0.039	0.765	2.56	0.00	8.77	4324.09
	03/20/19	2.1	11.0	2.380	0.341	<0.005	0.034	1.44	2.43	0.00	8.77	4324.09
	09/05/19	0.415	6.3	0.798	0.082	<0.00100	0.0204	0.485	0.428	0.00	10.22	4322.64
	01/08/20	<0.100	1.02	0.018	0.00143	<0.00100	<0.00500	0.000857	0.00136	0.00	10.30	4322.56
	03/31/20	<0.100	0.811	0.032	0.00282	<0.00100	<0.00100	0.00119	0.00383	0.00	10.05	4322.81
	10/29/20	<0.247	0.375	0.000960	0.00019	<0.0001	<0.0050	<0.00100	0.00048	0.00	11.01	4321.85
	01/27/21	<0.100	<0.500	0.000308	<0.00100	<0.00100	<0.00500	<0.00100	<0.00300	0.00	11.25	4321.61
	04/08/21	0.0247	0.292	<0.00100	<0.00100	<0.00100	<0.00500	<0.00100	<0.00300	0.00	10.71	4322.15
	07/13/21	0.0601	0.596	<0.00100	<0.00100	<0.00100	0.00242	<0.00100	<0.00300	0.00	10.90	4321.96
	10/08/2021	<0.100	<0.500	0.000383	<0.00100	<0.00100	0.013	<0.00100	<0.00300	0.00	11.24	4321.62
	1/12/2022	<0.100	<0.500	0.000169	<0.00100	<0.00100	<0.00500	<0.00100	<0.00300	0.00		
	7/19/2022	<1	<0.125	<0.005	<0.012	<0.005	<0.012	<0.012	<0.012	0.00	11.16	4321.70
	10/18/2022	NS	NS	NS	NS	NS	NS	NS	NS		DRY	
	1/28/2023	<1.0	<0.125	<0.005	<0.012	<0.005	<0.012	<0.012	<0.012	0.00	9.69	4323.17
MW-15	02/27/19	<1.0	3.28	0.3180	<0.012	<0.005	<0.012	<0.012	0.0130	NM	NM	--
4333.42	03/15/19	<1.0	0.334	0.038	<0.012	<0.005	<0.012	<0.012	<0.012	0.00	9.43	4323.99
	09/05/19	<0.100	0.217	0.0018	<0.00100	<0.00100	<0.00500	<0.00100	<0.00300	0.00	10.56	4322.86
	01/08/20	<0.100	<0.500	<0.00100	<0.00100	<0.00100	<0.00500	<0.00100	<0.00300	0.00	10.60	4322.82
	03/31/20	<0.100	<0.500	<0.00100	<0.00100	<0.00100	<0.00500	<0.00100	<0.00300	0.00	10.37	4323.05
MW-16	03/15/19	<1.0	<0.125	<0.005	<0.012	<0.005	<0.012	<0.012	<0.012	0.00	10.10	4318.11
4328.21	09/04/19	<0.100	0.323	<0.00100	<0.00100	<0.00100	<0.00500	<0.00100	<0.00300	0.00	10.30	4317.91
	01/06/20	<0.100	<0.500	<0.00100	<0.00100	<0.00100	<0.00500	<0.00100	<0.00300	0.00	11.02	4317.19
	04/01/20	<0.100	<0.500	<0.00100	<0.00100	<0.00100	<0.00500	<0.00100	<0.00300	0.00	10.71	4317.50
	01/11/22	<0.100	<0.500	<0.00100	<0.00100	<0.00100	<0.00500	<0.00100	<0.00300	0.00	10.88	4317.33

**Table 1
Groundwater Analytical Results and Elevation Data
Triple Stop Chevron
1034 West Gentile Street, Layton, Utah
Release NUB; Facility ID 3000500**

Sample ID/ TOC	DATE	TPH-DRO	TPH-GRO	BENZENE	ETHYL- BENZENE	MTBE	NAPH- THALENE	TOLUENE	XYLENES	FPT	DTW	Groundwater Elevation
	MM/DD/YY	(mg/L)	(mg/L)	(mg/L)	(mg/L)	(mg/L)	(mg/L)	(mg/L)	(mg/L)	(feet)	(feet)	(feet)
DERR ISL		1	1	0.005	0.7	0.2	0.7	1	10			
DERR Tier 1		10	10	0.30	4	0.2	0.7	3	10			
MW-17 4327.91	03/15/19	<1.0	<0.125	<0.005	<0.012	<0.005	<0.012	<0.012	<0.012	0.00	9.62	4318.29
MW-18	03/15/19	<1.0	<0.125	<0.005	<0.012	<0.005	<0.012	<0.012	<0.012	0.00	9.12	4318.62
4327.74	09/04/19	<0.100	0.324	<0.00100	<0.00100	<0.00100	<0.00500	<0.00100	<0.00300	0.00	9.45	4318.29
	01/06/20	<0.100	<0.500	0.00159	<0.00100	<0.00100	<0.00500	<0.00100	<0.00300	0.00	10.01	4317.73
	04/01/20	<0.100	<0.500	<0.00100	<0.00100	<0.00100	<0.00500	<0.00100	<0.00300	0.00	9.71	4318.03
	04/07/21	0.0531	0.150	0.0181	<0.00100	0.000169	<0.00100	<0.00100	0.00117	0.00	10.26	4317.48
	07/15/21	<0.100	<0.500	0.00731	<0.00100	<0.00100	<0.00500	<0.00100	<0.00300	0.00	10.26	4317.48
	10/06/2021	<0.100	<0.500	<0.00100	<0.00100	<0.00100	<0.00500	<0.00100	<0.00300	0.00	10.51	4317.23
	1/11/2022	<0.100	<0.500	<0.00100	<0.00100	<0.00100	<0.00500	<0.00100	<0.00300	0.00	10.00	4317.74

**Table 1
Groundwater Analytical Results and Elevation Data
Triple Stop Chevron
1034 West Gentile Street, Layton, Utah
Release NUB; Facility ID 3000500**

Sample ID/ TOC	DATE	TPH-DRO	TPH-GRO	BENZENE	ETHYL- BENZENE	MTBE	NAPH- THALENE	TOLUENE	XYLENES	FPT	DTW	Groundwater Elevation
	MM/DD/YY	(mg/L)	(mg/L)	(mg/L)	(mg/L)	(mg/L)	(mg/L)	(mg/L)	(mg/L)	(feet)	(feet)	(feet)
DERR ISL		1	1	0.005	0.7	0.2	0.7	1	10			
DERR Tier 1		10	10	0.30	4	0.2	0.7	3	10			
MW-19	03/15/19	<1.0	6.29	4.23	0.423	<0.005	0.040	0.085	0.333	0.00	8.05	4319.07
4327.12	09/04/19	1.47	10.30	8.130	0.81	<0.00100	0.0548	0.0589	0.0589	0.00	8.46	4318.66
	09/27/19	1.68	12.50	9.700	0.746	<0.0400	0.0862	0.0464	1.51	0.00	8.61	4318.51
	01/07/20	0.198	4.56	2.140	0.0558	<0.00100	0.00401	0.00165	<0.00300	0.00	8.83	4318.29
	04/01/20	0.559	14.20	4.580	0.3720	<0.00500	<0.250	<0.0500	0.0569	0.00	8.59	4318.53
	10/29/20	0.371	5.59	1.190	0.2240	<0.005	<0.05	0.08530	0.517	0.00	9.23	4317.89
	01/27/21	0.313	1.47	0.340	0.156	<0.0100	<0.0500	0.00886	0.00742	0.00	9.66	4317.46
	04/07/21	2.04	36.4	3.98	0.998	<0.00500	0.0521	4.06	4.22	0.00	9.10	4318.02
	07/14/21	1.09	48.3	5.31	0.938	<0.0500	0.0731	0.526	3.18	0.00	9.24	4317.88
	10/06/2021	0.861	11.6	3.04	0.593	<0.0100	0.0762	0.319	1.5	0.00	9.48	4317.64
	1/12/2022	1.06	22.2	3.92	0.791	<0.025	0.0851	0.511	3.85	0.00		
	4/27/2022	1.7	8.3	1.84	0.541	<0.005	0.063	0.243	2.61	0.00	9.00	4318.12
	5/12/2022	<1.0	<0.125	<0.005	<0.012	<0.005	<0.012	<0.012	<0.012	0.00	NM	
	7/19/2022	1.7	0.67	0.097	0.03	<0.005	0.02	<0.012	0.162	0.00	9.22	4317.90
	10/19/2022	<1.0	0.568	0.106	0.06	<0.005	<0.012	<0.012	0.200	0.00	9.60	4317.52
	1/30/2023	<1.0	<0.125	0.02	<0.012	<0.005	<0.012	<0.012	<0.012	0.00	8.25	4318.87
	4/21/2023	<1.0	0.42	<0.005	<0.012	<0.005	<0.012	<0.012	0.151	0.00	7.03	4320.09
	8/25/2023	2.7	1.29	0.163	0.235	<0.005	0.084	0.0170	0.322	0.00	8.63	4318.49

**Table 1
Groundwater Analytical Results and Elevation Data
Triple Stop Chevron
1034 West Gentile Street, Layton, Utah
Release NUB; Facility ID 3000500**

Sample ID/ TOC	DATE	TPH-DRO	TPH-GRO	BENZENE	ETHYL- BENZENE	MTBE	NAPH- THALENE	TOLUENE	XYLENES	FPT	DTW	Groundwater Elevation
	MM/DD/YY	(mg/L)	(mg/L)	(mg/L)	(mg/L)	(mg/L)	(mg/L)	(mg/L)	(mg/L)	(feet)	(feet)	(feet)
DERR ISL		1	1	0.005	0.7	0.2	0.7	1	10			
DERR Tier 1		10	10	0.30	4	0.2	0.7	3	10			
MW-20	03/15/19	<1.0	<0.125	<0.005	<0.012	<0.005	<0.012	<0.012	<0.012	0.00	8.75	4318.61
4327.36	04/07/21	0.0686	3.36	1.43	0.0210	<0.0100	0.00222	0.0127	0.0169	0.00	9.72	4317.64
	07/14/21	0.268	15.9	1.82	0.161	<0.0200	0.0359	0.136	0.0888	0.00	9.76	4317.60
	10/06/2021	0.117	0.598	0.132	0.0868	<0.00100	0.00653	0.00223	0.00159	0.00	10.02	4317.34
	1/11/2022	<0.100	0.136	0.00188	0.000185	<0.00100	<0.005	<0.001	<0.003	0.00	9.49	4317.87
	4/27/2022	<1	<0.125	<0.005	<0.012	<0.005	<0.012	<0.012	<0.012	0.00	9.56	4317.80
	7/18/2022	<1	<0.125	<0.005	<0.012	<0.005	<0.012	<0.012	<0.012	0.00	9.75	4317.61
	10/19/2022	<1	<0.125	<0.005	<0.012	<0.005	<0.012	<0.012	<0.012	0.00	10.10	4317.26
	1/30/2023	<1.0	<0.125	<0.005	<0.012	<0.005	<0.012	<0.012	<0.012	0.00	8.89	4318.47
MW-21	03/15/19	<1.0	<0.125	<0.005	<0.012	<0.005	<0.012	<0.012	<0.012	0.00	9.55	4318.77
4328.32	09/04/19	<0.100	0.361	<0.00100	<0.00100	<0.00100	<0.00500	<0.00100	<0.00300	0.00	9.73	4318.59
	01/06/20	0.19	<0.500	0.00065	<0.00100	<0.00100	<0.00500	<0.00100	<0.00300	0.00	10.35	4317.97
	04/01/20	<0.100	<0.500	0.00756	<0.00100	<0.00100	<0.00500	<0.00100	<0.00300	0.00	10.09	4318.23
	7/18/2022	<1	<0.125	<0.005	<0.012	<0.005	<0.012	<0.012	<0.012	0.00	10.49	4317.83
	10/19/2022	<1	<0.125	<0.005	<0.012	<0.005	<0.012	<0.012	<0.012	0.00	10.47	4317.85
	1/30/2023	<1.0	<0.125	0.007	<0.012	<0.005	<0.012	<0.012	<0.012	0.00	9.67	4318.65
	4/21/2023	<1.0	<0.125	<0.005	<0.012	<0.005	<0.012	<0.012	<0.012	0.00	8.45	4319.87
	8/25/2023	<1.0	<0.125	0.049	<0.012	<0.005	<0.012	<0.012	<0.012	0.00	9.90	4318.42

Table 1
Groundwater Analytical Results and Elevation Data
Triple Stop Chevron
1034 West Gentile Street, Layton, Utah
Release NUB; Facility ID 3000500

Sample ID/ TOC	DATE	TPH-DRO	TPH-GRO	BENZENE	ETHYL- BENZENE	MTBE	NAPH- THALENE	TOLUENE	XYLENES	FPT	DTW	Groundwater Elevation
	MM/DD/YY	(mg/L)	(mg/L)	(mg/L)	(mg/L)	(mg/L)	(mg/L)	(mg/L)	(mg/L)	(feet)	(feet)	(feet)
DERR ISL		1	1	0.005	0.7	0.2	0.7	1	10			
DERR Tier 1		10	10	0.30	4	0.2	0.7	3	10			
MW-22	02/27/19	6.7	41.4	6.32	2.12	<0.200	<0.500	10.4	16.9	NM	NM	--
4333.90	03/20/19	1.1	2.35	0.42	0.116	<0.005	0.016	0.182	0.665	0.00	11.60	4322.30
	09/04/19	1.08	7.40	0.25	0.180	<0.00100	0.0286	0.462	1.280	0.00	12.70	4321.20
	01/07/20	1.85	29.50	6.81	1.11	<0.00100	0.144	1.06	2.06	0.00	12.83	4321.07
	03/31/20	1.45	15.90	3.62	0.495	<0.100	<0.500	1.58	2.08	0.00	12.59	4321.31
	10/29/20	0.394	3.09	0.12	0.136	<0.0001	0.02	0.0212	0.366	0.00	13.29	4320.61
	04/08/21	0.664	0.997	0.00627	0.0408	<0.00100	0.00714	0.0212	0.134	0.00	13.08	4320.82
	07/16/21	0.207	1.46	0.00458	0.0328	<0.00100	0.00335	0.00405	0.0429	0.00	13.35	4320.55
	10/07/2021	0.0847	0.342	0.00327	0.00528	<0.00100	0.00205	0.00103	0.00749	0.00	13.58	4320.32
	1/13/2022	<0.1	<0.500	0.00138	0.00225	<0.00100	<0.500	0.000729	0.0064	0.00		4333.90
	4/27/2022	<1	0.52	<0.005	<0.012	<0.005	<0.012	<0.012	0.032	0.00	13.00	4320.90
	7/19/2022	<1	0.826	<0.005	0.044	<0.005	<0.012	<0.012	0.208	0.00	13.36	4320.54
	10/18/2022	<1	<0.125	<0.005	<0.012	<0.005	<0.012	<0.012	<0.012	0.00	13.74	4320.16
	1/28/2023	<1.0	<0.125	<0.005	<0.012	<0.005	<0.012	<0.012	<0.012	0.00	12.22	4321.68
MW-23	02/27/19	5.2	21.5	5.850	1.09	<0.005	<0.012	5.96	8.56	NM	NM	--
4333.67	03/20/19	<1.0	1.02	0.184	0.048	<0.005	<0.012	0.231	0.270	0.00	11.90	4321.77
	09/26/19	0.917	1.96	0.728	0.143	<0.00200	0.0668	0.417	0.382	0.00	11.92	4321.75
	01/08/20	0.311	6.26	1.180	0.188	<0.00100	<0.00100	0.0602	0.412	0.00	13.02	4320.65
	03/31/20	0.363	8.90	2.24	0.177	<0.0250	<0.125	0.971	0.538	0.00	12.75	4320.92
	10/29/20	<0.100	0.404	0.0151	0.0232	<0.0001	0.00374	0.00058	0.00752	0.00	13.36	4320.31
	01/28/21	<0.100	<0.500	0.000372	0.0014	<0.00100	<0.00500	<0.00100	0.000610	0.00	13.72	4319.95
	04/08/21	0.260	0.437	0.00889	0.0266	<0.00100	0.00190	0.000575	0.0450	0.00	13.23	4320.44
	07/16/21	0.453	15.7	0.0359	0.224	<0.0250	<0.125	<0.0250	0.565	0.00	13.45	4320.22
	10/07/2021	0.0533	0.116	0.00368	0.0272	<0.00100	0.00168	<0.00100	0.00234	0.00	13.69	4319.98
	1/13/2022	<0.100	0.282	0.000248	0.00302	<0.00100	<0.00500	<0.00100	0.00227	0.00		

Table 1
Groundwater Analytical Results and Elevation Data
Triple Stop Chevron
1034 West Gentile Street, Layton, Utah
Release NUB; Facility ID 3000500

Sample ID/ TOC	DATE	TPH-DRO	TPH-GRO	BENZENE	ETHYL- BENZENE	MTBE	NAPH- THALENE	TOLUENE	XYLENES	FPT	DTW	Groundwater Elevation
	MM/DD/YY	(mg/L)	(mg/L)	(mg/L)	(mg/L)	(mg/L)	(mg/L)	(mg/L)	(mg/L)	(feet)	(feet)	(feet)
DERR ISL		1	1	0.005	0.7	0.2	0.7	1	10			
DERR Tier 1		10	10	0.30	4	0.2	0.7	3	10			
MW-24	03/20/19	4.9	18.6	5.420	0.942	FALSE	0.132	0.233	7.11	0.00	9.98	4323.34
4333.32	09/04/19	0.0394	0.390	0.005	<0.00100	<0.00100	<0.00500	<0.00100	<0.00300	0.00	11.61	4321.71
	01/07/20	1.35	20.3	7.860	1.27	<0.00100	0.0705	0.0304	1.18	0.00	11.66	4321.66
	03/31/20	1.10	<12.5	0.853	0.258	<0.0250	0.0309	0.0161	0.754	0.00	11.42	4321.90
	10/29/20	2.6	36.6	4.320	0.506	<0.002	0.0942	0.32	5.660	0.00	12.22	4321.10
	02/04/21	4.2	19.6	2.940	0.717	<0.0250	0.120	0.241	4.28	0.00	12.35	4320.97
	04/08/21	5.96	7.15	0.374	0.0891	<0.0250	0.0379	0.0152	0.445	0.00	11.98	4321.34
	07/13/21	1.07	16.8	0.569	0.206	<0.0250	0.028	0.0533	0.708	0.00	12.22	4321.10
	10/7/2021	-	3.69	0.0438	0.548	<0.0250	0.0649	0.0212	1.70	0.00	12.51	4320.81
	1/13/2022	1.00	<12.5	0.0119	0.00654	<0.0250	<0.125	<0.0250	0.0696	0.00	12.51	4320.81
	7/19/2022	<1	0.162	<0.005	<0.012	<0.005	<0.012	<0.012	<0.012	0.00	12.28	4321.04
	10/18/2022	2.3	<0.125	<0.005	<0.012	<0.005	<0.012	<0.012	<0.012	0.00	12.72	4320.60
	1/28/2023	<1.0	<0.125	0.007	<0.012	<0.005	<0.012	<0.012	<0.012	0.00	11.00	4322.32
	4/21/2023	<1.0	<0.125	<0.005	<0.012	<0.005	<0.012	<0.012	<0.012	0.00	9.45	4323.87
	8/25/2023	<1.0	<0.125	<0.005	<0.012	<0.005	<0.012	<0.012	<0.012	0.00	11.76	4321.56

Table 1
Groundwater Analytical Results and Elevation Data
Triple Stop Chevron
1034 West Gentile Street, Layton, Utah
Release NUB; Facility ID 3000500

Sample ID/ TOC	DATE	TPH-DRO	TPH-GRO	BENZENE	ETHYL- BENZENE	MTBE	NAPH- THALENE	TOLUENE	XYLENES	FPT	DTW	Groundwater Elevation
	MM/DD/YY	(mg/L)	(mg/L)	(mg/L)	(mg/L)	(mg/L)	(mg/L)	(mg/L)	(mg/L)	(feet)	(feet)	(feet)
DERR ISL		1	1	0.005	0.7	0.2	0.7	1	10			
DERR Tier 1		10	10	0.30	4	0.2	0.7	3	10			
MW-25	03/20/19	1.5	5.53	1.25	0.298	<0.005	0.028	0.243	2.06	0.00	9.01	4323.90
4332.91	09/04/19	<0.100	0.351	0.000668	<0.00100	<0.00100	<0.00500	<0.00100	<0.00300	0.00	10.88	4322.03
	01/07/20	<0.100	<0.500	0.00182	<0.00100	<0.00100	<0.00500	<0.00100	<0.00300	0.00	10.94	4321.97
	03/31/20	<0.100	<0.500	0.00136	<0.00100	<0.00100	<0.00500	<0.00100	<0.00300	0.00	10.68	4322.23
	04/08/21	0.0501	<0.500	0.000130	0.00348	<0.00100	<0.00500	0.000415	0.00809	0.00	11.21	4321.70
	7/19/2022	<1	<0.125	<0.005	<0.012	<0.005	<0.012	<0.012	<0.012	0.00	11.49	4321.42
	10/18/2022	<1	<0.125	<0.005	<0.012	<0.005	<0.012	<0.012	<0.012	0.00	12.04	4320.87
	1/28/2023	<1.0	<0.125	<0.005	<0.012	<0.005	<0.012	<0.012	<0.012	0.00	10.16	4322.75
MW-26	03/19/19	<1.0	0.991	0.127	<0.012	<0.005	<0.012	0.012	0.033	0.00	8.31	4324.36
4332.67	7/19/2022	<1	<0.125	<0.005	<0.012	<0.005	<0.012	<0.012	<0.012	0.00	11.02	4321.65
	10/18/2022	<1	<0.125	<0.005	<0.012	<0.005	<0.012	<0.012	<0.012	0.00	11.47	4321.20
	1/28/2023	<1.0	<0.125	<0.005	<0.012	<0.005	<0.012	<0.012	<0.012	0.00	9.33	4323.34
MW-27	03/20/19	<1.0	1.44	0.2810	0.056	<0.005	<0.012	0.618	0.334	0.00	13.37	4319.95
4333.32	7/19/2022	1.3	4.72	0.2030	0.259	<0.005	0.029	1.010	2.050	0.00	14.25	4319.07
	10/18/2022	<1.0	0.55	<0.005	0.017	<0.005	<0.012	<0.012	0.288	0.00	14.58	4318.74
	1/28/2023	<1.0	0.46	0.012	0.060	<0.005	<0.012	0.058	0.184	0.00	13.67	4319.65
	4/21/2023	<1.0	1.58	0.029	<0.012	<0.005	<0.012	0.104	1.120	0.00	12.63	4320.69
	8/25/2023	1.20	4.54	0.103	0.336	<0.005	0.036	1.230	1.980	0.00	13.83	4319.49
MW-28	03/20/19	<1.0	<0.125	<0.005	<0.012	<0.005	<0.012	<0.012	<0.012	NM	NM	--
MW-29	03/20/19	<1.0	<0.125	0.1200	<0.012	<0.005	<0.012	<0.012	<0.012	NM	NM	--
4326.35	4/27/2022	<1	<0.125	0.014	<0.012	<0.005	<0.012	<0.012	<0.012	NM	9.68	4316.67
	7/18/2022	<1	<0.125	<0.005	<0.012	<0.005	<0.012	<0.012	<0.012	NM	9.76	4316.59
	10/19/2022	<1	<0.125	<0.005	<0.012	<0.005	<0.012	<0.012	<0.012	NM	10.16	4316.19
	1/30/2023	<1.0	<0.125	<0.005	<0.012	<0.005	<0.012	<0.012	<0.012	0.00	8.77	4317.58

Table 1
Groundwater Analytical Results and Elevation Data
Triple Stop Chevron
1034 West Gentile Street, Layton, Utah
Release NUB; Facility ID 3000500

Sample ID/ TOC	DATE	TPH-DRO	TPH-GRO	BENZENE	ETHYL- BENZENE	MTBE	NAPH- THALENE	TOLUENE	XYLENES	FPT	DTW	Groundwater Elevation
	MM/DD/YY	(mg/L)	(mg/L)	(mg/L)	(mg/L)	(mg/L)	(mg/L)	(mg/L)	(mg/L)	(feet)	(feet)	(feet)
DERR ISL		1	1	0.005	0.7	0.2	0.7	1	10			
DERR Tier 1		10	10	0.30	4	0.2	0.7	3	10			
MW-30	03/20/19	<1.0	0.978	0.8200	0.076	<0.005	<0.012	0.014	0.068	NM		--
4326.86	09/04/19	0.0784	0.516	0.1390	0.0584	<0.00100	<0.0050	<0.00100	<0.00100	0.00	8.88	4317.98
	01/07/20	<0.100	<0.500	0.0098	<0.00100	<0.00100	<0.0050	<0.00100	<0.00300	0.00	9.28	4317.58
	04/01/20	<0.100	<0.500	0.00348	<0.00100	<0.00100	<0.0050	<0.00100	<0.00300	0.00	9.03	4317.83
	10/29/20	<0.0247	0.0932	0.02040	<0.00100	<0.0001	<0.0050	<0.00100	<0.00300	0.00	9.68	4317.18
	01/27/21	<0.100	<0.500	0.000131	<0.00100	<0.00100	<0.00500	<0.00100	0.003000	0.00	10.15	4316.71
	04/07/21	<0.100	<0.500	<0.00100	<0.00100	<0.00100	<0.00500	<0.00100	0.003000	0.00	9.62	4317.24
	07/15/21	0.0295	<0.500	<0.00100	<0.00100	<0.00100	<0.00500	<0.00100	<0.00300	0.00	9.71	4317.15
	10/06/2021	<0.100	<0.500	0.0253	<0.00100	<0.00100	<0.00500	<0.00100	<0.00300	0.00	9.93	4316.93
	1/12/2022	0.0406	2.74	0.938	0.0022	<0.00100	<0.00500	0.00249	0.0205	0.00		
	4/27/2022	<1	0.292	0.162	<0.012	<0.005	<0.012	<0.012	<0.012	0.00	9.51	4317.35
	5/12/2022	<1.0	<0.125	<0.005	<0.012	<0.005	<0.012	<0.012	<0.012	0.00	NM	
	7/18/2022	<1.0	<0.125	<0.005	<0.012	<0.005	<0.012	<0.012	<0.012	0.00	9.67	4317.19
	10/19/2022	<1.0	<0.125	0.063	<0.012	<0.005	<0.012	<0.012	<0.012	0.00	10.07	4316.79
	1/30/2023	<1.0	<0.125	<0.005	<0.012	<0.005	<0.012	<0.012	<0.012	0.00	8.63	4318.23
	4/21/2023	<1.0	<0.125	<0.005	<0.012	<0.005	<0.012	<0.012	<0.012	0.00	7.36	4319.50
	8/25/2023	<1.0	<0.125	<0.005	<0.012	<0.005	<0.012	<0.012	<0.012	0.00	9.08	4317.78

**Table 1
Groundwater Analytical Results and Elevation Data
Triple Stop Chevron
1034 West Gentile Street, Layton, Utah
Release NUB; Facility ID 3000500**

Sample ID/ TOC	DATE	TPH-DRO	TPH-GRO	BENZENE	ETHYL- BENZENE	MTBE	NAPH- THALENE	TOLUENE	XYLENES	FPT	DTW	Groundwater Elevation
	MM/DD/YY	(mg/L)	(mg/L)	(mg/L)	(mg/L)	(mg/L)	(mg/L)	(mg/L)	(mg/L)	(feet)	(feet)	(feet)
DERR ISL		1	1	0.005	0.7	0.2	0.7	1	10			
DERR Tier 1		10	10	0.30	4	0.2	0.7	3	10			
MW-31	03/27/19	<1.0	<0.125	<0.005	<0.012	<0.005	<0.012	<0.012	<0.012	0.00	8.36	4317.50
4325.86	09/04/19	<0.100	0.34	<0.00100	<0.00100	<0.00100	<0.00100	<0.00100	<0.00100	0.00	8.85	4317.01
	01/06/20	<0.100	<0.500	<0.00100	<0.00100	<0.00100	<0.00100	<0.00100	<0.00100	0.00	9.42	4316.44
	04/01/20	<0.100	0.134	0.0342	<0.00100	<0.00100	<0.00100	<0.00100	<0.00100	0.00	9.13	4316.73
	10/29/20	<0.02	0.385	0.3850	<0.00100	<0.0001	<0.00100	<0.00100	<0.00100	0.00	9.70	4316.16
	01/27/21	<0.100	0.836	0.2480	0.00355	<0.00100	<0.00500	<0.00100	0.000244	0.00	10.23	4315.63
	04/07/21	0.0609	1.030	0.3540	0.000428	0.000123	<0.00500	<0.00100	0.000794	0.00	9.74	4316.12
	07/14/21	0.0297	0.709	0.0260	0.00074	0.000248	<0.00500	<0.00100	0.00146	0.00	9.66	4316.20
	10/04/2021	<0.100	<0.500	0.00126	0.00148	0.000205	0.00195	<0.00100	0.000354	0.00	9.87	4315.99
	1/11/2022	<0.100	0.757	0.432	<0.00100	<0.00100	<0.00500	<0.00100	0.000605	0.00	9.38	4316.48
	4/27/2022	<1	3.68	2.77	0.234	<0.005	<0.012	0.036	0.000605	0.00	9.63	4316.23
	5/12/2022	<1.0	<0.125	<0.005	<0.012	<0.005	<0.012	<0.012	<0.012	0.00	NM	
	7/19/2022	<1.0	0.33	<0.005	<0.012	<0.005	<0.012	<0.012	<0.012	0.00	9.55	4316.31
	10/19/2022	<1.0	<0.125	<0.005	<0.012	<0.005	<0.012	<0.012	<0.012	0.00	9.98	4315.88
	1/28/2023	<1.0	<0.125	<0.005	<0.012	<0.005	<0.012	<0.012	<0.012	0.00	8.64	4317.22

Table 1
Groundwater Analytical Results and Elevation Data
Triple Stop Chevron
1034 West Gentile Street, Layton, Utah
Release NUB; Facility ID 3000500

Sample ID/ TOC	DATE	TPH-DRO	TPH-GRO	BENZENE	ETHYL- BENZENE	MTBE	NAPH- THALENE	TOLUENE	XYLENES	FPT	DTW	Groundwater Elevation
	MM/DD/YY	(mg/L)	(mg/L)	(mg/L)	(mg/L)	(mg/L)	(mg/L)	(mg/L)	(mg/L)	(feet)	(feet)	(feet)
DERR ISL		1	1	0.005	0.7	0.2	0.7	1	10			
DERR Tier 1		10	10	0.30	4	0.2	0.7	3	10			
MW-32	03/27/19	<1.0	<0.125	<0.005	<0.012	<0.005	<0.012	<0.012	<0.012	0.00	8.74	4317.15
4325.89	01/27/21	<0.100	<0.500	<0.00100	<0.00100	<0.00100	<0.00500	<0.00100	<0.00300	0.00	10.61	4315.28
	04/07/21	0.0383	<0.500	0.00011	<0.00100	<0.00100	<0.00500	<0.00100	<0.00300	0.00	10.15	4315.74
	07/14/21	<0.100	<0.500	<0.00100	<0.00100	0.000175	<0.00500	<0.00100	0.00037	0.00	10.04	4315.85
	10/04/2021	<0.100	<0.500	<0.00100	<0.00100	0.000194	<0.00500	<0.00100	<0.00300	0.00	10.23	4315.66
	1/11/2022	<0.100	<0.500	<0.00100	<0.00100	<0.00100	<0.00500	<0.00100	<0.00300	0.00	9.79	4316.10
	4/27/2022	<1	<0.125	0.007	<0.012	<0.005	<0.012	<0.012	<0.012	0.00	10.01	4315.88
	7/18/2022	<1	<0.125	0.075	<0.012	<0.005	<0.012	<0.012	<0.012	0.00	9.93	4315.96
	10/18/2022	<1	<0.125	0.038	<0.012	<0.005	<0.012	<0.012	<0.012	0.00	10.35	4315.54
	1/30/2023	<1.0	<0.125	<0.005	<0.012	<0.005	<0.012	<0.012	<0.012	0.00	8.99	4316.90
	4/21/2023	<1.0	<0.125	<0.005	<0.012	<0.005	<0.012	<0.012	<0.012	0.00	7.73	4318.16
	8/25/2023	<1.0	<0.125	<0.005	<0.012	<0.005	<0.012	<0.012	<0.012	0.00	9.13	4316.76
MW-33 4332.19	03/27/19	<1.0	<0.125	<0.005	<0.012	<0.005	<0.012	<0.012	<0.012	0.00	8.06	4324.93
MW-34	03/27/19	<1.0	<0.125	<0.005	<0.012	<0.005	<0.012	<0.012	<0.012	NM	NM	-
4331.78	09/04/19	<0.100	0.336	0.00253	<0.00100	<0.00100	<0.00500	<0.00100	<0.00300	0.00	10.48	4321.30
	01/07/20	<0.100	<0.500	<0.00100	<0.00100	<0.00100	<0.00500	<0.00100	<0.00300	0.00	10.45	4321.33
	03/31/20	<0.100	<0.500	<0.00100	<0.00100	<0.00100	<0.00500	<0.00100	<0.00300	0.00	10.19	4321.59
	01/13/22	<0.100	<0.500	<0.00100	<0.00100	<0.00100	<0.00500	0.000353	0.000458	0.00		4331.78
MW-35	04/02/19	<1.0	1.84	0.9270	<0.012	<0.005	0.017	0.078	0.258	NM	NM	--
4332.19	09/04/19	0.262	5.81	1.5200	0.0931	<0.00100	0.0121	0.140	0.558	0.00	13.37	4318.82
	01/08/20	0.161	4.70	1.0600	0.0735	<0.00100	0.0255	0.199	0.203	0.00	13.72	4318.47
	03/31/20	0.0710	0.62	0.0789	0.0292	<0.00100	0.0125	0.00267	0.0673	0.00	13.44	4318.75
	07/16/21	<0.100	<0.500	0.0000966	<0.00100	<0.00100	<0.00500	<0.00100	<0.00300	0.00		4332.19
	10/07/2021	<0.100	<0.500	0.000434	0.00117	<0.00100	0.00385	<0.00100	0.000651	0.00	14.00	4318.19
	1/13/2022	<0.100	0.21	0.00215	0.0115	<0.00100	0.00713	0.000904	0.0815	0.00		4332.19

**Table 1
Groundwater Analytical Results and Elevation Data
Triple Stop Chevron
1034 West Gentile Street, Layton, Utah
Release NUB; Facility ID 3000500**

Sample ID/ TOC	DATE	TPH-DRO	TPH-GRO	BENZENE	ETHYL- BENZENE	MTBE	NAPH- THALENE	TOLUENE	XYLENES	FPT	DTW	Groundwater Elevation
	MM/DD/YY	(mg/L)	(mg/L)	(mg/L)	(mg/L)	(mg/L)	(mg/L)	(mg/L)	(mg/L)	(feet)	(feet)	(feet)
DERR ISL		1	1	0.005	0.7	0.2	0.7	1	10			
DERR Tier 1		10	10	0.30	4	0.2	0.7	3	10			
MW-36	04/02/19	<1.0	<0.125	0.026	<0.012	<0.005	<0.012	<0.012	<0.012	NM	NM	-
4333.26	09/04/19	<0.100	1.31	0.193	<0.00100	<0.00100	<0.00500	<0.00100	0.00352	0.00	11.60	4321.66
	01/07/20	<0.100	<0.500	<0.00100	<0.00100	<0.00100	<0.00500	<0.00100	<0.00300	0.00	11.74	4321.52
	03/31/20	<0.100	<0.500	<0.00100	<0.00100	<0.00100	<0.00500	<0.00100	<0.00300	0.00	11.50	4321.76
MW-37	04/02/19	<1.0	<0.125	0.0860	<0.012	<0.005	<0.012	<0.012	<0.012	NM	NM	-
4326.48	09/04/19	<0.105	0.334	<0.00100	<0.00100	<0.00100	<0.00100	<0.00100	<0.00100	0.00	9.58	4316.90
	01/06/20	<0.100	<0.500	<0.00100	<0.00100	<0.00100	<0.00100	<0.00100	<0.00100	0.00	10.10	4316.38
	04/01/20	<0.100	<0.500	<0.00100	<0.00100	<0.00100	<0.00100	<0.00100	<0.00100	0.00	9.84	4316.64
	10/29/20	<0.0329	<0.100	<0.00100	<0.00100	<0.00100	<0.00100	<0.00100	<0.00100	0.00	10.36	4316.12
	01/27/21	<0.100	<0.500	<0.00100	<0.00100	<0.00100	<0.00500	<0.00100	<0.00300	0.00	10.79	4315.69
	04/07/21	<0.100	<0.500	<0.00100	<0.00100	<0.00100	<0.00500	<0.00100	<0.00300	0.00	10.40	4316.08
	07/14/21	<0.100	<0.500	<0.00100	<0.00100	<0.00100	<0.00500	<0.00100	<0.00300	0.00	10.37	4316.11
	10/04/2021	<0.100	<0.500	<0.00100	<0.00100	<0.00100	<0.00500	<0.00100	<0.00300	0.00	10.53	4315.95
	1/11/2022	<0.100	<0.500	<0.00100	<0.00100	<0.00100	<0.00500	<0.00100	<0.00300	0.00	10.11	4316.37
	7/18/2022	<1	<0.125	<0.005	<0.012	<0.005	<0.012	<0.012	<0.012	0.00	10.31	4316.17
	10/18/2022	<1	<0.125	<0.005	<0.012	<0.005	<0.012	<0.012	<0.012	0.00	10.65	4315.83
	1/28/2023	<1.0	<0.125	<0.005	<0.012	<0.005	<0.012	<0.012	<0.012	0.00	9.33	4317.15
MW-38	07/15/21	<0.100	<0.500	0.000262	<0.00100	0.000402	<0.00500	<0.00100	0.000332	0.00	10.32	4315.53
4325.85	10/04/2021	<0.100	<0.500	<0.00100	<0.00100	0.000765	<0.00500	<0.00100	0.000397	0.00	10.55	4315.30
	1/11/2022	<0.100	<0.500	<0.00100	<0.00100	0.000217	<0.00500	<0.00100	0.000222	0.00	10.04	4315.81
	5/12/2022	<1.0	<0.125	<0.005	<0.012	<0.005	<0.012	<0.012	<0.012	0.00	NM	
	7/18/2022	<1	<0.125	<0.005	<0.012	<0.005	<0.012	<0.012	<0.012	0.00	10.15	4315.70
	10/19/2022	<1	<0.125	<0.005	<0.012	<0.005	<0.012	<0.012	<0.012	0.00	10.62	4315.23
	1/28/2023	<1.0	<0.125	<0.005	<0.012	<0.005	<0.012	<0.012	<0.012	0.00	9.34	4316.51

Table 1
Groundwater Analytical Results and Elevation Data
Triple Stop Chevron
1034 West Gentile Street, Layton, Utah
Release NUB; Facility ID 3000500

Sample ID/ TOC	DATE	TPH-DRO	TPH-GRO	BENZENE	ETHYL- BENZENE	MTBE	NAPH- THALENE	TOLUENE	XYLENES	FPT	DTW	Groundwater Elevation
	MM/DD/YY	(mg/L)	(mg/L)	(mg/L)	(mg/L)	(mg/L)	(mg/L)	(mg/L)	(mg/L)	(feet)	(feet)	(feet)
DERR ISL		1	1	0.005	0.7	0.2	0.7	1	10			
DERR Tier 1		10	10	0.30	4	0.2	0.7	3	10			
MW-39	07/15/21	<0.100	<0.500	0.000285	<0.00100	<0.00100	<0.00500	<0.00100	<0.00300	0.00	10.20	4315.29
4325.49	10/04/2021	<0.100	<0.500	<0.00100	<0.00100	0.000286	<0.00500	<0.00100	<0.00300	0.00	10.46	4315.03
	1/11/2022	<0.100	<0.500	<0.00100	<0.00100	0.0002	<0.00500	<0.00100	<0.00300	0.00	10.02	4315.47
	7/18/2022	<1	<0.125	<0.005	<0.012	<0.005	<0.012	<0.012	<0.012	0.00	10.00	4315.49
	10/18/2022	<1	<0.125	<0.005	<0.012	<0.005	<0.012	<0.012	<0.012	0.00	10.50	4314.99
	1/28/2023	<1.0	<0.125	<0.005	<0.012	<0.005	<0.012	<0.012	<0.012	0.00	9.36	4316.13
MW-40	10/07/2021	0.0794	1.11	0.191	0.064	<0.00100	0.0134	0.0230	0.245	0.00	9.35	4318.12
4327.47	1/12/2022	0.299	4.16	0.591	0.301	<0.00100	0.0311	0.0403	0.713	0.00		4327.47
	4/27/2022	<1	0.595	0.038	0.042	<0.005	<0.012	<0.012	0.043	0.00	9.77	4317.70
	5/12/2022	<1	0.666	0.103	0.013	<0.005	0.016	0.013	0.235	0.00	NM	
	7/18/2022	<1	<0.125	<0.005	<0.012	<0.005	<0.012	<0.012	<0.012	0.00	9.11	4318.36
	10/20/2022	<1	<0.125	<0.005	<0.012	<0.005	<0.012	<0.012	<0.012	0.00	9.45	4318.02
	1/30/2023	<1.0	<0.125	<0.005	<0.012	<0.005	<0.012	<0.012	<0.012	0.00	8.09	4319.38
MW-41	10/07/2021	<0.200	0.135	0.0346	0.00186	<0.00100	0.0283	0.000321	0.00284	0.00	11.15	4317.68
4328.83	1/12/2022	0.104	2.31	0.948	0.00063	<0.0001	0.00914	0.00326	0.0374	0.00		4328.83
	4/27/2022	<1	<0.125	0.017	<0.012	<0.005	<0.012	<0.012	<0.012	0.00	10.64	4318.19
	5/12/2022	<1	0.146	0.146	<0.012	<0.005	<0.012	<0.012	<0.012	0.00	NM	
	7/18/2022	1.6	3.97	0.780	<0.012	<0.005	<0.012	<0.012	0.19	0.00	10.92	4317.91
	10/20/2022	<1	0.565	0.071	<0.012	<0.005	<0.012	<0.012	<0.012	0.00	11.48	4317.35
	1/30/2023	<1.0	<0.125	<0.005	<0.012	<0.005	<0.012	<0.012	<0.012	0.00	9.85	4318.98
	4/21/2023	<1.0	<0.125	<0.005	<0.012	<0.005	<0.012	<0.012	<0.012	0.00	8.41	4320.42
	8/25/2023	<1.0	<0.125	<0.005	<0.012	<0.005	<0.012	<0.012	<0.012	0.00	10.30	4318.53

**Table 1
Groundwater Analytical Results and Elevation Data
Triple Stop Chevron
1034 West Gentile Street, Layton, Utah
Release NUB; Facility ID 3000500**

Sample ID/ TOC	DATE	TPH-DRO	TPH-GRO	BENZENE	ETHYL- BENZENE	MTBE	NAPH- THALENE	TOLUENE	XYLENES	FPT	DTW	Groundwater Elevation
	MM/DD/YY	(mg/L)	(mg/L)	(mg/L)	(mg/L)	(mg/L)	(mg/L)	(mg/L)	(mg/L)	(feet)	(feet)	(feet)
DERR ISL		1	1	0.005	0.7	0.2	0.7	1	10			
DERR Tier 1		10	10	0.30	4	0.2	0.7	3	10			
MW-42	10/07/2021	0.610	13.3	6.57	0.576	<0.00100	0.0593	1.06	1.62	0.00	9.90	4316.94
4326.84	1/12/2022	0.292	<100	3.07	0.384	<0.20	<1.0	0.114	0.203	0.00		4326.84
	4/27/2022	1.400	7.76	4.28	0.442	<0.005	0.063	0.245	1.3	0.00	9.49	4317.35
	5/12/2022	<1	1.32	0.854	0.025	<0.005	0.016	0.043	0.174	0.00	NM	
	6/10/2022	<1	<0.125	<0.005	<0.012	<0.005	<0.012	<0.012	<0.012	0.00	NM	
	7/19/2022	1.3	6.48	2.36	0.29	<0.005	0.062	0.065	0.609	0.00	9.61	4317.23
	10/19/2022	<1	<0.125	0.101	0.014	<0.005	<0.012	<0.012	<0.012	0.00	10.00	4316.84
	1/30/2023	<1.0	0.259	0.203	0.027	<0.005	<0.012	<0.012	0.029	0.00	8.68	4318.16
	4/21/2023	<1.0	<0.125	<0.005	<0.012	<0.005	<0.012	<0.012	<0.012	0.00	7.49	4319.35
	8/25/2023	1.6	1.1	0.476	0.176	<0.005	0.013	<0.012	0.048	0.00	9.02	4317.82
MW-43	4/27/2022	<1	<0.125	0.022	<0.012	<0.005	<0.012	<0.012	<0.012	0.00	NM	
4326.93	5/12/2022	<1	<0.125	<0.005	<0.012	<0.005	<0.012	<0.012	<0.012	0.00	NM	
	7/19/2022	<1	<0.125	<0.005	<0.012	<0.005	<0.012	<0.012	<0.012	0.00	10.12	4316.81
	10/19/2022	<1	<0.125	<0.005	<0.012	<0.005	<0.012	<0.012	<0.012	0.00	10.52	4316.41
	1/30/2023	<1.0	<0.125	<0.005	<0.012	<0.005	<0.012	<0.012	<0.012	0.00	9.13	4317.80
MW-44	4/27/2022	<1	2.61	0.843	0.198	<0.005	0.028	0.059	0.46	0.00	NM	
4327.03	5/12/2022	<1	<0.125	<0.005	<0.012	<0.005	<0.012	<0.012	<0.012	0.00	NM	
	7/19/2022	1.7	2.93	0.874	0.052	<0.005	0.046	<0.012	0.079	0.00	9.44	4317.59
	10/19/2022	1.1	0.527	0.189	<0.012	<0.005	<0.012	<0.012	<0.012	0.00	9.81	4317.22
	1/30/2023	<1.0	1.12	0.976	0.034	<0.005	<0.012	0.014	0.097	0.00	8.44	4318.59
	4/21/2023	1.3	2.2	0.610	0.066	<0.005	<0.012	0.015	0.328	0.00	7.16	4319.87
	8/25/2023	<1.0	0.177	0.177	<0.012	<0.005	<0.012	<0.012	<0.012	0.00	8.83	4318.20

**Table 1
Groundwater Analytical Results and Elevation Data
Triple Stop Chevron
1034 West Gentile Street, Layton, Utah
Release NUB; Facility ID 3000500**

Sample ID/ TOC	DATE	TPH-DRO	TPH-GRO	BENZENE	ETHYL- BENZENE	MTBE	NAPH- THALENE	TOLUENE	XYLENES	FPT	DTW	Groundwater Elevation
	MM/DD/YY	(mg/L)	(mg/L)	(mg/L)	(mg/L)	(mg/L)	(mg/L)	(mg/L)	(mg/L)	(feet)	(feet)	(feet)
DERR ISL		1	1	0.005	0.7	0.2	0.7	1	10			
DERR Tier 1		10	10	0.30	4	0.2	0.7	3	10			
MW-45	4/27/2022	<1	1.09	0.187	0.087	<0.005	0.013	0.025	0.42	0.00	NM	
4329.24	5/12/2022	2.0	4.47	0.901	0.192	<0.005	0.034	0.834	1.25	0.00	NM	
	7/18/2022	1.5	5.6	0.963	0.308	<0.005	0.035	0.162	1.08	0.00	10.63	4318.61
	10/19/2022	1.5	0.784	0.161	0.082	<0.005	<0.012	0.02	0.266	0.00	10.98	4318.26
	1/30/2023	<1.0	0.848	0.021	0.06	<0.005	<0.012	<0.012	0.026	0.00	9.54	4319.70
	4/21/2023	<1.0	1.04	0.012	0.04	<0.005	<0.012	<0.012	0.163	0.00	8.18	4321.06
	8/25/2023	2.5	3.78	0.066	0.269	<0.005	0.046	0.03	1.53	0.00	9.95	4319.29
EW-3	03/31/20	12.2	82.8	4.14	1.87	<0.0500	0.458	4.290	23.600	0.00	10.43	4323.67
4334.10	04/08/21	8.00	20.4	0.0123	0.346	<0.0500	0.0777	0.271	2.11	0.00	11.04	4323.06
	7/19/2022	1.0	2.25	<0.005	0.017	<0.005	<0.012	<0.012	0.108	0.00	11.56	4322.54
	10/18/2022	1.4	1.97	<0.005	0.033	<0.005	0.012	<0.012	0.221	0.00	11.99	4322.11
	1/28/2023	<1.0	<0.125	<0.005	<0.012	<0.005	<0.012	<0.012	0.028	0.00	10.03	4324.07
	4/21/2023	<1.0	<0.125	<0.005	<0.012	<0.005	<0.012	<0.012	<0.012	0.00	8.97	4325.13
	8/25/2023	<1.0	1.85	<0.005	<0.012	<0.005	<0.012	<0.012	0.031	0.00	10.95	4323.15
EW-4	04/08/21	7.38	38.9	<0.100	0.462	<0.100	0.181	0.129	6.860	0.00	11.74	-
	7/19/2022	7.7	14.1	<0.005	<0.012	<0.005	0.012	<0.012	0.016	0.00	12.58	
	10/18/2022	1.3	0.919	<0.005	<0.012	<0.005	<0.012	<0.012	<0.012	0.00	12.75	
	1/28/2023	<1.0	0.298	<0.005	<0.012	<0.005	<0.012	<0.012	<0.012	0.00	10.96	
	4/21/2023	<1.0	<0.125	<0.005	<0.012	<0.005	<0.012	<0.012	<0.012	0.00	9.41	
	8/25/2023	<1.0	0.322	0.006	<0.012	<0.005	<0.012	<0.012	<0.012	0.00	11.81	
RW-1	09/18/19	5.81	54.3	1.21	1.22	<0.100	0.246	3.53	10.6	0.00	NM	-
	04/02/20	2.49	14.4	<0.100	0.36	<0.100	<0.500	0.644	3.14	0.00	NM	-

Table 1
Groundwater Analytical Results and Elevation Data
Triple Stop Chevron
1034 West Gentile Street, Layton, Utah
Release NUB; Facility ID 3000500

Sample ID/ TOC	DATE	TPH-DRO	TPH-GRO	BENZENE	ETHYL- BENZENE	MTBE	NAPH- THALENE	TOLUENE	XYLENES	FPT	DTW	Groundwater Elevation
	MM/DD/YY	(mg/L)	(mg/L)	(mg/L)	(mg/L)	(mg/L)	(mg/L)	(mg/L)	(mg/L)	(feet)	(feet)	(feet)
DERR ISL		1	1	0.005	0.7	0.2	0.7	1	10			
DERR Tier 1		10	10	0.30	4	0.2	0.7	3	10			
RW-2	09/18/19	6.23	143	11.60	2.20	<0.500	0.303	18.5	16.7	0.00	NM	-
	04/02/20	3.81	79.7	4.08	1.51	<0.0500	0.148	13.2	12.9	0.00	NM	-
	04/08/21	13.7	86.3	2.43	1.16	<0.100	0.384	9.98	17.4	0.00	NM	-
	07/13/21	3.52	76.2	0.796	0.422	<0.100	0.199	4.49	4.38	0.00	NM	-
	10/08/2021	6.57	31.2	0.982	1.04	<0.100	0.363	7.04	7.95	0.00	NM	
	1/12/2022	4.6	23	0.0277	0.955	<0.100	0.214	3.49	6.37	0.00	NM	
AS-2	4/27/2022	<1	<0.125	<0.005	<0.012	<0.005	<0.012	<0.012	<0.012	0.00	NM	
AS-3	4/27/2022	<1	<0.125	<0.005	<0.012	<0.005	<0.012	<0.012	<0.012	0.00	NM	
AS-6	4/27/2022	<1	<0.125	<0.005	<0.012	<0.005	<0.012	<0.012	<0.012	0.00	NM	

Notes:

* The sample labels for MW-3 & MW-4 were reversed on 3/15/19. Resampled on 3/19/19.

TOC = Top of Casing Elevation

TPH -GRO = Total Petroleum Hydrocarbons as Gasoline

TPH--DRO = Total Petroleum Hydrocarbons as Diesel

DTW = Depth to groundwater

FPT = Free Product Thickness

DERR = Utah Division of Environmental Response and Remediation

ISL = Initial Screening Level

Tier 1 = Tier 1 Screening Level

mg/l = milligram/liter



9/5/2023

Work Order: 23H2367
Project: Triple Stop Chevron

Rockwell Solutions, Inc
Attn: Dave Hansen
718 East Bridger Lane
Elk Ridge, UT 84651

Client Service Contact: 801.262.7299

The analyses presented on this report were performed in accordance with the National Environmental Laboratory Accreditation Program (NELAP) unless noted in the comments, flags, or case narrative. If the report is to be used for regulatory compliance, it should be presented in its entirety, and not be altered.



Approved By:

Mark Broadhead, Project Manager



Chemtech-Ford Laboratories

Serving the Intermountain West Since 1953

9632 South 500 West
Sandy, UT 84070
O: (801) 262-7299 F: (866) 792-0093
www.ChemtechFord.com



Certificate of Analysis

Rockwell Solutions, Inc
Dave Hansen
718 East Bridger Lane
Elk Ridge, UT 84651

PO#:
Receipt: 8/28/23 13:10 @ 5.4 °C
Date Reported: 9/5/2023
Project Name: Triple Stop Chevron

Sample ID: MW-1

Matrix: Water

Lab ID: 23H2367-01

Date Sampled: 8/25/23 14:15

Sampled By: David Hansen

	<u>Result</u>	<u>Units</u>	<u>Minimum Reporting Limit</u>	<u>Method</u>	<u>Preparation Date/Time</u>	<u>Analysis Date/Time</u>	<u>Flag(s)</u>
MBTEXn							
Benzene	0.063	mg/L	0.005	EPA 8260D/5030B	8/29/23	8/29/23	
Ethylbenzene	0.209	mg/L	0.012	EPA 8260D/5030B	8/29/23	8/29/23	
Methyl tert-Butyl Ether (MTBE)	ND	mg/L	0.005	EPA 8260D/5030B	8/29/23	8/29/23	J-LOW-L
Naphthalene	0.023	mg/L	0.012	EPA 8260D/5030B	8/29/23	8/29/23	
Toluene	0.012	mg/L	0.012	EPA 8260D/5030B	8/29/23	8/29/23	
Xylenes, total	0.439	mg/L	0.012	EPA 8260D/5030B	8/29/23	8/29/23	
Gasoline Range							
Gasoline Range Organics	1.90	mg/L	0.125	EPA 8260B/C /5030A/[CALC]	8/29/23	8/29/23	
Diesel Range							
Diesel Range Organics	1.7	mg/L	1.0	EPA 8015 C	9/1/23	9/1/23	



Chemtech-Ford Laboratories

Serving the Intermountain West Since 1953

9632 South 500 West
Sandy, UT 84070
O: (801) 262-7299 F: (866) 792-0093
www.ChemtechFord.com



Certificate of Analysis

Rockwell Solutions, Inc
Dave Hansen
718 East Bridger Lane
Elk Ridge, UT 84651

PO#:
Receipt: 8/28/23 13:10 @ 5.4 °C
Date Reported: 9/5/2023
Project Name: Triple Stop Chevron

Sample ID: MW-2

Matrix: Water

Lab ID: 23H2367-02

Date Sampled: 8/25/23 13:45

Sampled By: David Hansen

	<u>Result</u>	<u>Units</u>	<u>Minimum Reporting Limit</u>	<u>Method</u>	<u>Preparation Date/Time</u>	<u>Analysis Date/Time</u>	<u>Flag(s)</u>
MBTEXn							
Benzene	ND	mg/L	0.005	EPA 8260D/5030B	8/29/23	8/29/23	
Ethylbenzene	ND	mg/L	0.012	EPA 8260D/5030B	8/29/23	8/29/23	
Methyl tert-Butyl Ether (MTBE)	ND	mg/L	0.005	EPA 8260D/5030B	8/29/23	8/29/23	J-LOW-L
Naphthalene	ND	mg/L	0.012	EPA 8260D/5030B	8/29/23	8/29/23	
Toluene	ND	mg/L	0.012	EPA 8260D/5030B	8/29/23	8/29/23	
Xylenes, total	ND	mg/L	0.012	EPA 8260D/5030B	8/29/23	8/29/23	
Gasoline Range							
Gasoline Range Organics	ND	mg/L	0.125	EPA 8260B/C /5030A/[CALC]	8/29/23	8/29/23	
Diesel Range							
Diesel Range Organics	ND	mg/L	1.0	EPA 8015 C	9/1/23	9/1/23	



Certificate of Analysis

Rockwell Solutions, Inc
Dave Hansen
718 East Bridger Lane
Elk Ridge, UT 84651

PO#:
Receipt: 8/28/23 13:10 @ 5.4 °C
Date Reported: 9/5/2023
Project Name: Triple Stop Chevron

Sample ID: MW-4

Matrix: Water

Lab ID: 23H2367-03

Date Sampled: 8/25/23 16:45

Sampled By: David Hansen

	<u>Result</u>	<u>Units</u>	<u>Minimum Reporting Limit</u>	<u>Method</u>	<u>Preparation Date/Time</u>	<u>Analysis Date/Time</u>	<u>Flag(s)</u>
MBTEXn							
Benzene	ND	mg/L	0.005	EPA 8260D/5030B	8/29/23	8/29/23	
Ethylbenzene	ND	mg/L	0.012	EPA 8260D/5030B	8/29/23	8/29/23	
Methyl tert-Butyl Ether (MTBE)	ND	mg/L	0.005	EPA 8260D/5030B	8/29/23	8/29/23	J-LOW-L
Naphthalene	ND	mg/L	0.012	EPA 8260D/5030B	8/29/23	8/29/23	
Toluene	ND	mg/L	0.012	EPA 8260D/5030B	8/29/23	8/29/23	
Xylenes, total	ND	mg/L	0.012	EPA 8260D/5030B	8/29/23	8/29/23	
Gasoline Range							
Gasoline Range Organics	ND	mg/L	0.125	EPA 8260B/C /5030A/[CALC]	8/29/23	8/29/23	
Diesel Range							
Diesel Range Organics	ND	mg/L	1.0	EPA 8015 C	9/1/23	9/1/23	



Chemtech-Ford Laboratories

Serving the Intermountain West Since 1953

9632 South 500 West
Sandy, UT 84070
O: (801) 262-7299 F: (866) 792-0093
www.ChemtechFord.com



Certificate of Analysis

Rockwell Solutions, Inc
Dave Hansen
718 East Bridger Lane
Elk Ridge, UT 84651

PO#:
Receipt: 8/28/23 13:10 @ 5.4 °C
Date Reported: 9/5/2023
Project Name: Triple Stop Chevron

Sample ID: MW-10

Matrix: Water

Lab ID: 23H2367-04

Date Sampled: 8/25/23 18:15

Sampled By: David Hansen

	<u>Result</u>	<u>Units</u>	<u>Minimum Reporting Limit</u>	<u>Method</u>	<u>Preparation Date/Time</u>	<u>Analysis Date/Time</u>	<u>Flag(s)</u>
MBTEXn							
Benzene	ND	mg/L	0.005	EPA 8260D/5030B	8/29/23	8/29/23	
Ethylbenzene	ND	mg/L	0.012	EPA 8260D/5030B	8/29/23	8/29/23	
Methyl tert-Butyl Ether (MTBE)	ND	mg/L	0.005	EPA 8260D/5030B	8/29/23	8/29/23	J-LOW-L
Naphthalene	ND	mg/L	0.012	EPA 8260D/5030B	8/29/23	8/29/23	
Toluene	ND	mg/L	0.012	EPA 8260D/5030B	8/29/23	8/29/23	
Xylenes, total	0.111	mg/L	0.012	EPA 8260D/5030B	8/29/23	8/29/23	
Gasoline Range							
Gasoline Range Organics	ND	mg/L	0.125	EPA 8260B/C /5030A/[CALC]	8/29/23	8/29/23	
Diesel Range							
Diesel Range Organics	ND	mg/L	1.0	EPA 8015 C	9/1/23	9/1/23	



Certificate of Analysis

Rockwell Solutions, Inc
Dave Hansen
718 East Bridger Lane
Elk Ridge, UT 84651

PO#:
Receipt: 8/28/23 13:10 @ 5.4 °C
Date Reported: 9/5/2023
Project Name: Triple Stop Chevron

Sample ID: MW-19

Matrix: Water

Lab ID: 23H2367-05

Date Sampled: 8/25/23 15:15

Sampled By: David Hansen

	<u>Result</u>	<u>Units</u>	<u>Minimum Reporting Limit</u>	<u>Method</u>	<u>Preparation Date/Time</u>	<u>Analysis Date/Time</u>	<u>Flag(s)</u>
MBTEXn							
Benzene	0.163	mg/L	0.005	EPA 8260D/5030B	8/29/23	8/29/23	
Ethylbenzene	0.235	mg/L	0.012	EPA 8260D/5030B	8/29/23	8/29/23	
Methyl tert-Butyl Ether (MTBE)	ND	mg/L	0.005	EPA 8260D/5030B	8/29/23	8/29/23	J-LOW-L
Naphthalene	0.084	mg/L	0.012	EPA 8260D/5030B	8/29/23	8/29/23	
Toluene	0.017	mg/L	0.012	EPA 8260D/5030B	8/29/23	8/29/23	
Xylenes, total	0.322	mg/L	0.012	EPA 8260D/5030B	8/29/23	8/29/23	
Gasoline Range							
Gasoline Range Organics	1.29	mg/L	0.125	EPA 8260B/C /5030A/[CALC]	8/29/23	8/29/23	
Diesel Range							
Diesel Range Organics	2.7	mg/L	1.0	EPA 8015 C	9/1/23	9/1/23	



Certificate of Analysis

Rockwell Solutions, Inc
Dave Hansen
718 East Bridger Lane
Elk Ridge, UT 84651

PO#:
Receipt: 8/28/23 13:10 @ 5.4 °C
Date Reported: 9/5/2023
Project Name: Triple Stop Chevron

Sample ID: MW-21

Matrix: Water

Lab ID: 23H2367-06

Date Sampled: 8/25/23 11:45

Sampled By: David Hansen

	<u>Result</u>	<u>Units</u>	<u>Minimum Reporting Limit</u>	<u>Method</u>	<u>Preparation Date/Time</u>	<u>Analysis Date/Time</u>	<u>Flag(s)</u>
MBTEXn							
Benzene	0.049	mg/L	0.005	EPA 8260D/5030B	8/29/23	8/29/23	
Ethylbenzene	ND	mg/L	0.012	EPA 8260D/5030B	8/29/23	8/29/23	
Methyl tert-Butyl Ether (MTBE)	ND	mg/L	0.005	EPA 8260D/5030B	8/29/23	8/29/23	J-LOW-L
Naphthalene	ND	mg/L	0.012	EPA 8260D/5030B	8/29/23	8/29/23	
Toluene	ND	mg/L	0.012	EPA 8260D/5030B	8/29/23	8/29/23	
Xylenes, total	ND	mg/L	0.012	EPA 8260D/5030B	8/29/23	8/29/23	
Gasoline Range							
Gasoline Range Organics	ND	mg/L	0.125	EPA 8260B/C /5030A/[CALC]	8/29/23	8/29/23	
Diesel Range							
Diesel Range Organics	ND	mg/L	1.0	EPA 8015 C	9/1/23	9/1/23	



Certificate of Analysis

Rockwell Solutions, Inc
Dave Hansen
718 East Bridger Lane
Elk Ridge, UT 84651

PO#:
Receipt: 8/28/23 13:10 @ 5.4 °C
Date Reported: 9/5/2023
Project Name: Triple Stop Chevron

Sample ID: MW-24

Matrix: Water

Lab ID: 23H2367-07

Date Sampled: 8/25/23 17:15

Sampled By: David Hansen

	<u>Result</u>	<u>Units</u>	<u>Minimum Reporting Limit</u>	<u>Method</u>	<u>Preparation Date/Time</u>	<u>Analysis Date/Time</u>	<u>Flag(s)</u>
MBTEXn							
Benzene	ND	mg/L	0.005	EPA 8260D/5030B	8/29/23	8/29/23	
Ethylbenzene	ND	mg/L	0.012	EPA 8260D/5030B	8/29/23	8/29/23	
Methyl tert-Butyl Ether (MTBE)	ND	mg/L	0.005	EPA 8260D/5030B	8/29/23	8/29/23	J-LOW-L
Naphthalene	ND	mg/L	0.012	EPA 8260D/5030B	8/29/23	8/29/23	
Toluene	ND	mg/L	0.012	EPA 8260D/5030B	8/29/23	8/29/23	
Xylenes, total	ND	mg/L	0.012	EPA 8260D/5030B	8/29/23	8/29/23	
Gasoline Range							
Gasoline Range Organics	ND	mg/L	0.125	EPA 8260B/C /5030A/[CALC]	8/29/23	8/29/23	
Diesel Range							
Diesel Range Organics	ND	mg/L	1.0	EPA 8015 C	9/1/23	9/1/23	



Certificate of Analysis

Rockwell Solutions, Inc
Dave Hansen
718 East Bridger Lane
Elk Ridge, UT 84651

PO#:
Receipt: 8/28/23 13:10 @ 5.4 °C
Date Reported: 9/5/2023
Project Name: Triple Stop Chevron

Sample ID: MW-27

Matrix: Water

Lab ID: 23H2367-08

Date Sampled: 8/25/23 17:45

Sampled By: David Hansen

	<u>Result</u>	<u>Units</u>	<u>Minimum Reporting Limit</u>	<u>Method</u>	<u>Preparation Date/Time</u>	<u>Analysis Date/Time</u>	<u>Flag(s)</u>
MBTEXn							
Benzene	0.103	mg/L	0.005	EPA 8260D/5030B	8/29/23	8/29/23	
Ethylbenzene	0.336	mg/L	0.012	EPA 8260D/5030B	8/29/23	8/29/23	
Methyl tert-Butyl Ether (MTBE)	ND	mg/L	0.005	EPA 8260D/5030B	8/29/23	8/29/23	J-LOW-L
Naphthalene	0.036	mg/L	0.012	EPA 8260D/5030B	8/29/23	8/29/23	
Toluene	1.23	mg/L	0.125	EPA 8260D/5030B	8/29/23	8/29/23	
Xylenes, total	1.98	mg/L	0.012	EPA 8260D/5030B	8/29/23	8/29/23	
Gasoline Range							
Gasoline Range Organics	4.54	mg/L	0.125	EPA 8260B/C /5030A/[CALC]	8/29/23	8/29/23	
Diesel Range							
Diesel Range Organics	1.2	mg/L	1.0	EPA 8015 C	9/1/23	9/1/23	



Chemtech-Ford Laboratories

Serving the Intermountain West Since 1953

9632 South 500 West
Sandy, UT 84070
O: (801) 262-7299 F: (866) 792-0093
www.ChemtechFord.com



Certificate of Analysis

Rockwell Solutions, Inc
Dave Hansen
718 East Bridger Lane
Elk Ridge, UT 84651

PO#:
Receipt: 8/28/23 13:10 @ 5.4 °C
Date Reported: 9/5/2023
Project Name: Triple Stop Chevron

Sample ID: MW-30

Matrix: Water

Lab ID: 23H2367-09

Date Sampled: 8/25/23 12:45

Sampled By: David Hansen

	<u>Result</u>	<u>Units</u>	<u>Minimum Reporting Limit</u>	<u>Method</u>	<u>Preparation Date/Time</u>	<u>Analysis Date/Time</u>	<u>Flag(s)</u>
MBTEXn							
Benzene	ND	mg/L	0.005	EPA 8260D/5030B	8/29/23	8/29/23	
Ethylbenzene	ND	mg/L	0.012	EPA 8260D/5030B	8/29/23	8/29/23	
Methyl tert-Butyl Ether (MTBE)	ND	mg/L	0.005	EPA 8260D/5030B	8/29/23	8/29/23	J-LOW-L
Naphthalene	ND	mg/L	0.012	EPA 8260D/5030B	8/29/23	8/29/23	
Toluene	ND	mg/L	0.012	EPA 8260D/5030B	8/29/23	8/29/23	
Xylenes, total	ND	mg/L	0.012	EPA 8260D/5030B	8/29/23	8/29/23	
Gasoline Range							
Gasoline Range Organics	ND	mg/L	0.125	EPA 8260B/C /5030A/[CALC]	8/29/23	8/29/23	
Diesel Range							
Diesel Range Organics	ND	mg/L	1.0	EPA 8015 C	9/1/23	9/1/23	



Chemtech-Ford Laboratories

Serving the Intermountain West Since 1953

9632 South 500 West
Sandy, UT 84070
O: (801) 262-7299 F: (866) 792-0093
www.ChemtechFord.com



Certificate of Analysis

Rockwell Solutions, Inc
Dave Hansen
718 East Bridger Lane
Elk Ridge, UT 84651

PO#:
Receipt: 8/28/23 13:10 @ 5.4 °C
Date Reported: 9/5/2023
Project Name: Triple Stop Chevron

Sample ID: MW-32

Matrix: Water

Lab ID: 23H2367-10

Date Sampled: 8/25/23 12:15

Sampled By: David Hansen

	<u>Result</u>	<u>Units</u>	<u>Minimum Reporting Limit</u>	<u>Method</u>	<u>Preparation Date/Time</u>	<u>Analysis Date/Time</u>	<u>Flag(s)</u>
MBTEXn							
Benzene	ND	mg/L	0.005	EPA 8260D/5030B	8/29/23	8/29/23	
Ethylbenzene	ND	mg/L	0.012	EPA 8260D/5030B	8/29/23	8/29/23	
Methyl tert-Butyl Ether (MTBE)	ND	mg/L	0.005	EPA 8260D/5030B	8/29/23	8/29/23	J-LOW-L
Naphthalene	ND	mg/L	0.012	EPA 8260D/5030B	8/29/23	8/29/23	
Toluene	ND	mg/L	0.012	EPA 8260D/5030B	8/29/23	8/29/23	
Xylenes, total	ND	mg/L	0.012	EPA 8260D/5030B	8/29/23	8/29/23	
Gasoline Range							
Gasoline Range Organics	ND	mg/L	0.125	EPA 8260B/C /5030A/[CALC]	8/29/23	8/29/23	
Diesel Range							
Diesel Range Organics	ND	mg/L	1.0	EPA 8015 C	9/1/23	9/1/23	



Chemtech-Ford Laboratories

Serving the Intermountain West Since 1953

9632 South 500 West
Sandy, UT 84070
O: (801) 262-7299 F: (866) 792-0093
www.ChemtechFord.com



Certificate of Analysis

Rockwell Solutions, Inc
Dave Hansen
718 East Bridger Lane
Elk Ridge, UT 84651

PO#:
Receipt: 8/28/23 13:10 @ 5.4 °C
Date Reported: 9/5/2023
Project Name: Triple Stop Chevron

Sample ID: MW-41

Matrix: Water

Lab ID: 23H2367-11

Date Sampled: 8/25/23 13:15

Sampled By: David Hansen

	<u>Result</u>	<u>Units</u>	<u>Minimum Reporting Limit</u>	<u>Method</u>	<u>Preparation Date/Time</u>	<u>Analysis Date/Time</u>	<u>Flag(s)</u>
MBTEXn							
Benzene	ND	mg/L	0.005	EPA 8260D/5030B	8/29/23	8/29/23	
Ethylbenzene	ND	mg/L	0.012	EPA 8260D/5030B	8/29/23	8/29/23	
Methyl tert-Butyl Ether (MTBE)	ND	mg/L	0.005	EPA 8260D/5030B	8/29/23	8/29/23	J-LOW-L
Naphthalene	ND	mg/L	0.012	EPA 8260D/5030B	8/29/23	8/29/23	
Toluene	ND	mg/L	0.012	EPA 8260D/5030B	8/29/23	8/29/23	
Xylenes, total	ND	mg/L	0.012	EPA 8260D/5030B	8/29/23	8/29/23	
Gasoline Range							
Gasoline Range Organics	ND	mg/L	0.125	EPA 8260B/C /5030A/[CALC]	8/29/23	8/29/23	
Diesel Range							
Diesel Range Organics	ND	mg/L	1.0	EPA 8015 C	9/1/23	9/1/23	



Chemtech-Ford Laboratories

Serving the Intermountain West Since 1953

9632 South 500 West
Sandy, UT 84070
O: (801) 262-7299 F: (866) 792-0093
www.ChemtechFord.com



Certificate of Analysis

Rockwell Solutions, Inc
Dave Hansen
718 East Bridger Lane
Elk Ridge, UT 84651

PO#:
Receipt: 8/28/23 13:10 @ 5.4 °C
Date Reported: 9/5/2023
Project Name: Triple Stop Chevron

Sample ID: MW-42

Matrix: Water

Lab ID: 23H2367-12

Date Sampled: 8/25/23 15:45

Sampled By: David Hansen

	<u>Result</u>	<u>Units</u>	<u>Minimum Reporting Limit</u>	<u>Method</u>	<u>Preparation Date/Time</u>	<u>Analysis Date/Time</u>	<u>Flag(s)</u>
MBTEXn							
Benzene	0.476	mg/L	0.005	EPA 8260D/5030B	8/29/23	8/29/23	
Ethylbenzene	0.176	mg/L	0.012	EPA 8260D/5030B	8/29/23	8/29/23	
Methyl tert-Butyl Ether (MTBE)	ND	mg/L	0.005	EPA 8260D/5030B	8/29/23	8/29/23	J-LOW-L
Naphthalene	0.013	mg/L	0.012	EPA 8260D/5030B	8/29/23	8/29/23	
Toluene	ND	mg/L	0.012	EPA 8260D/5030B	8/29/23	8/29/23	
Xylenes, total	0.048	mg/L	0.012	EPA 8260D/5030B	8/29/23	8/29/23	
Gasoline Range							
Gasoline Range Organics	1.10	mg/L	0.125	EPA 8260B/C /5030A/[CALC]	8/29/23	8/29/23	
Diesel Range							
Diesel Range Organics	1.6	mg/L	1.0	EPA 8015 C	9/1/23	9/1/23	



Chemtech-Ford Laboratories

Serving the Intermountain West Since 1953

9632 South 500 West
Sandy, UT 84070
O: (801) 262-7299 F: (866) 792-0093
www.ChemtechFord.com



Certificate of Analysis

Rockwell Solutions, Inc
Dave Hansen
718 East Bridger Lane
Elk Ridge, UT 84651

PO#:
Receipt: 8/28/23 13:10 @ 5.4 °C
Date Reported: 9/5/2023
Project Name: Triple Stop Chevron

Sample ID: MW-44

Matrix: Water

Lab ID: 23H2367-13

Date Sampled: 8/25/23 16:15

Sampled By: David Hansen

	<u>Result</u>	<u>Units</u>	<u>Minimum Reporting Limit</u>	<u>Method</u>	<u>Preparation Date/Time</u>	<u>Analysis Date/Time</u>	<u>Flag(s)</u>
MBTEXn							
Benzene	0.177	mg/L	0.005	EPA 8260D/5030B	8/29/23	8/29/23	
Ethylbenzene	ND	mg/L	0.012	EPA 8260D/5030B	8/29/23	8/29/23	
Methyl tert-Butyl Ether (MTBE)	ND	mg/L	0.005	EPA 8260D/5030B	8/29/23	8/29/23	J-LOW-L
Naphthalene	ND	mg/L	0.012	EPA 8260D/5030B	8/29/23	8/29/23	
Toluene	ND	mg/L	0.012	EPA 8260D/5030B	8/29/23	8/29/23	
Xylenes, total	ND	mg/L	0.012	EPA 8260D/5030B	8/29/23	8/29/23	
Gasoline Range							
Gasoline Range Organics	0.177	mg/L	0.125	EPA 8260B/C /5030A/[CALC]	8/29/23	8/29/23	
Diesel Range							
Diesel Range Organics	ND	mg/L	1.0	EPA 8015 C	9/1/23	9/1/23	



Chemtech-Ford Laboratories

Serving the Intermountain West Since 1953

9632 South 500 West
Sandy, UT 84070
O: (801) 262-7299 F: (866) 792-0093
www.ChemtechFord.com



Certificate of Analysis

Rockwell Solutions, Inc
Dave Hansen
718 East Bridger Lane
Elk Ridge, UT 84651

PO#:
Receipt: 8/28/23 13:10 @ 5.4 °C
Date Reported: 9/5/2023
Project Name: Triple Stop Chevron

Sample ID: MW-45

Matrix: Water

Lab ID: 23H2367-14

Date Sampled: 8/25/23 15:15

Sampled By: David Hansen

	<u>Result</u>	<u>Units</u>	<u>Minimum Reporting Limit</u>	<u>Method</u>	<u>Preparation Date/Time</u>	<u>Analysis Date/Time</u>	<u>Flag(s)</u>
MBTEXn							
Benzene	0.066	mg/L	0.005	EPA 8260D/5030B	8/31/23	8/31/23	
Ethylbenzene	0.269	mg/L	0.012	EPA 8260D/5030B	8/31/23	8/31/23	
Methyl tert-Butyl Ether (MTBE)	ND	mg/L	0.005	EPA 8260D/5030B	8/31/23	8/31/23	
Naphthalene	0.046	mg/L	0.012	EPA 8260D/5030B	8/31/23	8/31/23	
Toluene	0.030	mg/L	0.012	EPA 8260D/5030B	8/31/23	8/31/23	
Xylenes, total	1.53	mg/L	0.012	EPA 8260D/5030B	8/31/23	8/31/23	
Gasoline Range							
Gasoline Range Organics	3.78	mg/L	0.125	EPA 8260B/C /5030A/[CALC]	8/31/23	8/31/23	
Diesel Range							
Diesel Range Organics	2.5	mg/L	1.0	EPA 8015 C	9/1/23	9/1/23	



Chemtech-Ford Laboratories

Serving the Intermountain West Since 1953

9632 South 500 West
Sandy, UT 84070
O: (801) 262-7299 F: (866) 792-0093
www.ChemtechFord.com



Certificate of Analysis

Rockwell Solutions, Inc
Dave Hansen
718 East Bridger Lane
Elk Ridge, UT 84651

PO#:
Receipt: 8/28/23 13:10 @ 5.4 °C
Date Reported: 9/5/2023
Project Name: Triple Stop Chevron

Sample ID: EW-3

Matrix: Water

Lab ID: 23H2367-15

Date Sampled: 8/25/23 18:45

Sampled By: David Hansen

	<u>Result</u>	<u>Units</u>	<u>Minimum Reporting Limit</u>	<u>Method</u>	<u>Preparation Date/Time</u>	<u>Analysis Date/Time</u>	<u>Flag(s)</u>
MBTEXn							
Benzene	ND	mg/L	0.005	EPA 8260D/5030B	8/31/23	8/31/23	
Ethylbenzene	ND	mg/L	0.012	EPA 8260D/5030B	8/31/23	8/31/23	
Methyl tert-Butyl Ether (MTBE)	ND	mg/L	0.005	EPA 8260D/5030B	8/31/23	8/31/23	
Naphthalene	ND	mg/L	0.012	EPA 8260D/5030B	8/31/23	8/31/23	
Toluene	ND	mg/L	0.012	EPA 8260D/5030B	8/31/23	8/31/23	
Xylenes, total	0.031	mg/L	0.012	EPA 8260D/5030B	8/31/23	8/31/23	
Gasoline Range							
Gasoline Range Organics	1.85	mg/L	0.125	EPA 8260B/C /5030A/[CALC]	8/31/23	8/31/23	
Diesel Range							
Diesel Range Organics	ND	mg/L	1.0	EPA 8015 C	9/1/23	9/1/23	



Chemtech-Ford Laboratories

Serving the Intermountain West Since 1953

9632 South 500 West
Sandy, UT 84070
O: (801) 262-7299 F: (866) 792-0093
www.ChemtechFord.com



Certificate of Analysis

Rockwell Solutions, Inc
Dave Hansen
718 East Bridger Lane
Elk Ridge, UT 84651

PO#:
Receipt: 8/28/23 13:10 @ 5.4 °C
Date Reported: 9/5/2023
Project Name: Triple Stop Chevron

Sample ID: EW-4

Matrix: Water

Lab ID: 23H2367-16

Date Sampled: 8/25/23 19:15

Sampled By: David Hansen

	<u>Result</u>	<u>Units</u>	<u>Minimum Reporting Limit</u>	<u>Method</u>	<u>Preparation Date/Time</u>	<u>Analysis Date/Time</u>	<u>Flag(s)</u>
MBTEXn							
Benzene	0.006	mg/L	0.005	EPA 8260D/5030B	8/31/23	8/31/23	
Ethylbenzene	ND	mg/L	0.012	EPA 8260D/5030B	8/31/23	8/31/23	
Methyl tert-Butyl Ether (MTBE)	ND	mg/L	0.005	EPA 8260D/5030B	8/31/23	8/31/23	
Naphthalene	ND	mg/L	0.012	EPA 8260D/5030B	8/31/23	8/31/23	
Toluene	ND	mg/L	0.012	EPA 8260D/5030B	8/31/23	8/31/23	
Xylenes, total	ND	mg/L	0.012	EPA 8260D/5030B	8/31/23	8/31/23	
Gasoline Range							
Gasoline Range Organics	0.322	mg/L	0.125	EPA 8260B/C /5030A/[CALC]	8/31/23	8/31/23	
Diesel Range							
Diesel Range Organics	ND	mg/L	1.0	EPA 8015 C	9/1/23	9/1/23	



Chemtech-Ford Laboratories

Serving the Intermountain West Since 1953

9632 South 500 West
Sandy, UT 84070
O:(801) 262-7299 F: (866) 792-0093
www.ChemtechFord.com



Certificate of Analysis

Rockwell Solutions, Inc
Dave Hansen
718 East Bridger Lane
Elk Ridge, UT 84651

PO#:
Receipt: 8/28/23 13:10 @ 5.4 °C
Date Reported: 9/5/2023
Project Name: Triple Stop Chevron

Report Footnotes

Abbreviations

ND = Not detected at the corresponding Minimum Reporting Limit (MRL).

1 mg/L = one milligram per liter or 1 mg/kg = one milligram per kilogram = 1 part per million.

1 ug/L = one microgram per liter or 1 ug/kg = one microgram per kilogram = 1 part per billion.

1 ng/L = one nanogram per liter or 1 ng/kg = one nanogram per kilogram = 1 part per trillion.

On calculated parameters, there may be a slight difference between summing the rounded values shown on the report vs the unrounded values used in the calculation.

Flag Descriptions

J-LOW-L = Estimated low due to low recovery of LCS

CHAIN OF CUSTODY - SAMPLE SUBMITTAL FORM



**CHEMTECH-FORD
LABORATORIES**

Chemtech-Ford Laboratories
- Drop-Off Location -
1384 W 130 S
Orem, UT 84058
Phone: 801-229-2282

COMPANY: Rockwell Solutions
 ADDRESS: _____
 CITY/STATE/ZIP: _____
 PHONE #: _____
 CONTACT: _____
 EMAIL: _____
 PROJECT: Triple Stop Chevron
 PO Number: _____
 INVOICE EMAIL ADDRESS: _____

***RUSH Due Date**

Std

* Additional fees may apply

QC Level

QC1: None sent to client
 QC2: Batch QC, random sample
 QC3: 25% surcharge. Narrative + QC client sample
 QC4: 40% surcharge. QC3 + raw data

Pg. 1

Sample Condition		Delivery Method	
<input checked="" type="checkbox"/> Custody Seals	<input checked="" type="checkbox"/> COC Complete	<input type="checkbox"/> UPS	<input type="checkbox"/> USPS
<input checked="" type="checkbox"/> Container Intact	<input checked="" type="checkbox"/> Sufficient Sample Volume	<input type="checkbox"/> FedEx	<input type="checkbox"/> Chemtech-Ford Courier
<input checked="" type="checkbox"/> COC/Labels Agree	<input type="checkbox"/> Headspace Present (VOC)	<input checked="" type="checkbox"/> Walk-in	<input type="checkbox"/> Customer Courier
<input checked="" type="checkbox"/> Received on Ice	<input type="checkbox"/> Temperature Blank	Tracking Number: _____	
<input checked="" type="checkbox"/> Correct Containers	<input checked="" type="checkbox"/> Received within Holding Time		

TESTS REQUESTED											
											BOTTLE LOT #5
											W(4) 1314

23H2367 Pg 1

CLIENT SAMPLE INFORMATION				
Lab Use Only	LOCATION / IDENTIFICATION	DATE	TIME	MATRIX
-01	1. MW-1	8-25-23	1415	W
02	2. MW-2		1345	
03	3. MW-4		1645	
04	4. MW-10		1815	
05	5. MW-19		1515	
06	6. MW-21		1145	
07	7. MW-24		1715	
08	8. MW-27		1745	
09	9. MW-30		1245	
10	10. MW-32		1215	
11	11. MW-41		1315	

Sampled by: [print] David Hansen Sampled by: [signature] Del Zhen

ON ICE
 NOT ON ICE
 Temp (C°): 5.4

Special Instructions: _____

Samples received outside the EPA recommended temperature range of 0-6 C° may be rejected.

Relinquished by: [signature] <u>Del Zhen</u>	Date/Time <u>8-28-23 / 1310</u>	Received by: [signature] <u>Coleman</u>	Date/Time <u>8-28-23 1310</u>
Relinquished by: [signature] <u>Coleman</u>	Date/Time <u>8-28-23 1400</u>	Received by: [signature] <u>Nucne Tea</u>	Date/Time <u>8/28/23 1515</u>
Relinquished by: [signature] _____	Date/Time _____	Received by: [signature] _____	Date/Time _____

Payment Terms are net 30 days OAC. 1.5% interest charge per month (18% per annum). Client agrees to pay collection costs and attorney's fees.

